



Former Dutch Pilots Association tender vessel, recently completely checked up and in great condition. Vessel fully ready for operations. Can be delivered under RINA class against additional costs. Vessel's running hours (approx. 12.500 since new) and low consumption figures ensure lean performance. Large lot of spare parts available. Fitted with Hadrian rail, air-conditioned.

General

Builder
Built 1980, the Netherlands
Classification Register Holland (can be delivered under RINA against additional costs)
Notation 30 nm
Hull material Polyester (inspected for osmosis 2022, refitted and in perfect shape)

Dimensions

LOA 23,37 m.
Beam 5.19 m.
Draft 1.10 m.
Displacement 42 tonnes

Capacities

Cargo capacity 5 tonnes

Machinery

Main engines 2x GM Detroit 12V-71
Output 2x 265 kW / 360 hp
Generators 1x Kohler silent pack
Output 11.5 kW / 50 Hz / 3-phase / 230/400V
Propulsion 2x fixed-pitch propellers

Performance

Speed 17 kn. max
Consumption max 120 l/hr at max speed speed

Deck equipment

MOB device present

Tank capacities

Fuel oil 1.7 m³

Nav/Com

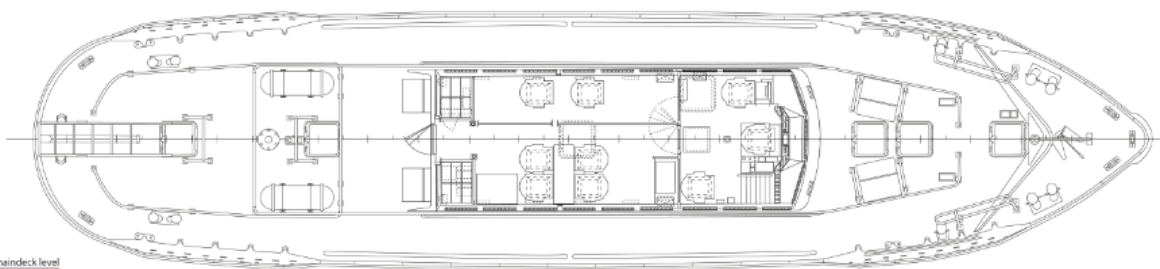
GMDSS A1 + Register Holland 30 nm
2x VHF, radar. GPS, Autopilot, AIS, gyro compass

Accommodation

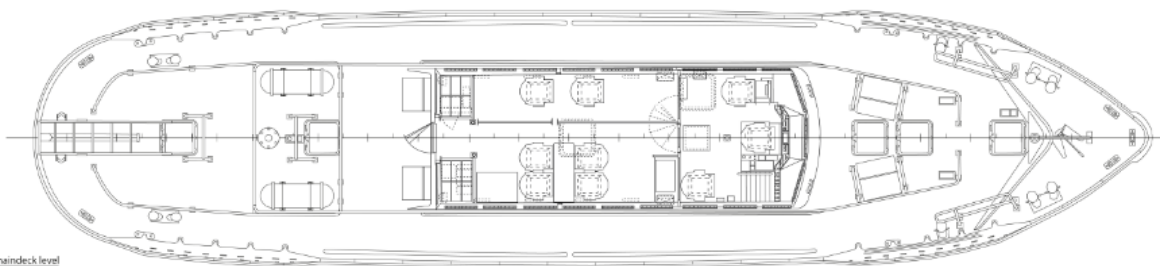
Seats 6 (up to 12 possible), air-conditioned and heated
Other Spacious mess room
Small kitchenette







View on maindeck level



View on maindeck level