



Jack-up barge built in 2015 in South-Korea with dimensions 50 x 28 meters. With 60 m legs, it is suitable for operations up to 40m depth and a significant wave height of 2.5 m. The jacking system is a SAMBO C.M.C. Lifting weight is 3600t. and holding weight is 4.800t. Jacking speed up and down is 40 m./hr. It has accommodation for 21 persons.

Jacking speed UP 40 m. per hour max
Jacking speed DOWN 40 m. per hour max
Leg length 60 m.
Jacking system SAMBO C.M.C.

General

Built 2015, South-Korea
Classification Korean (KRS)
Flag Panama

Machinery

Main gensets 2x
Hydraulic power 2x , both double pump executed packs
Winch hydraulics 1x power pack

Dimensions

LOA 50.00 m.
Beam 28.00 m.
Depth 4.50 m.
Draft 3.00 m.
Tonnage Gross 2.402
Nett 720

Deck equipment

Deck crane yes
Anchor winches 4x

Jacking system

Lifting 3.600 tonnes
Holding 4.800 tonnes
Deadweight 494 tonnes

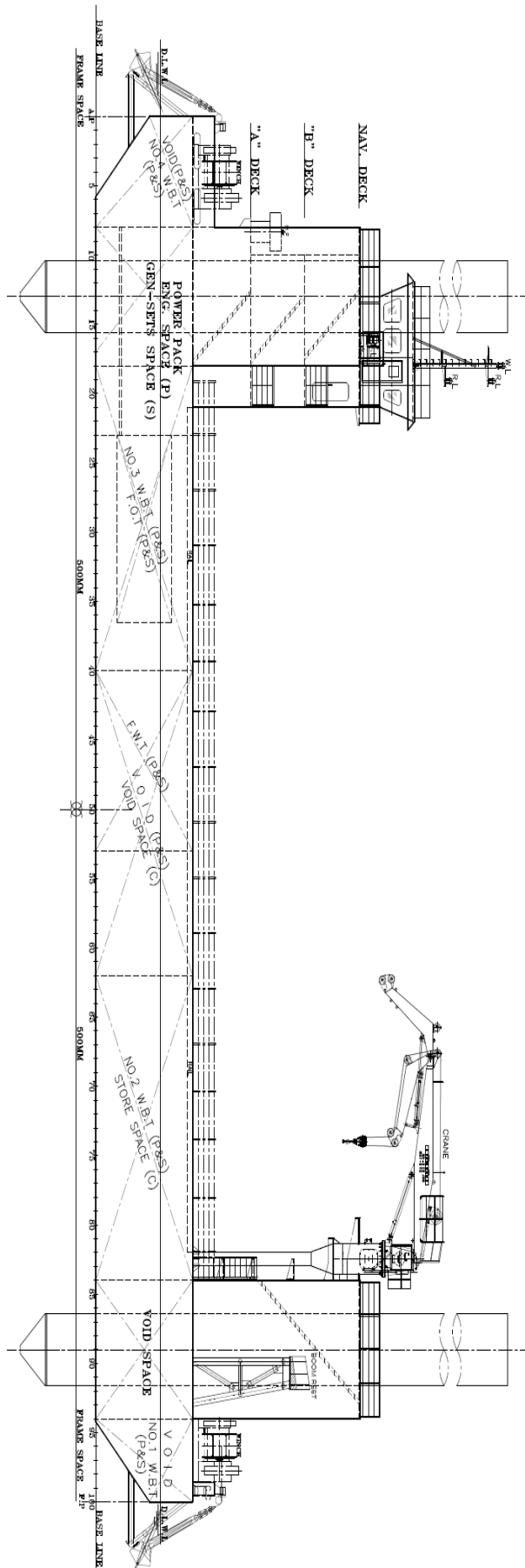
Accommodation

21 persons fixed accommodation
Fully laid-out accommodation including day/mess room, launmdry facilities, 1x single, 2x double and 4x 4-person cabins.

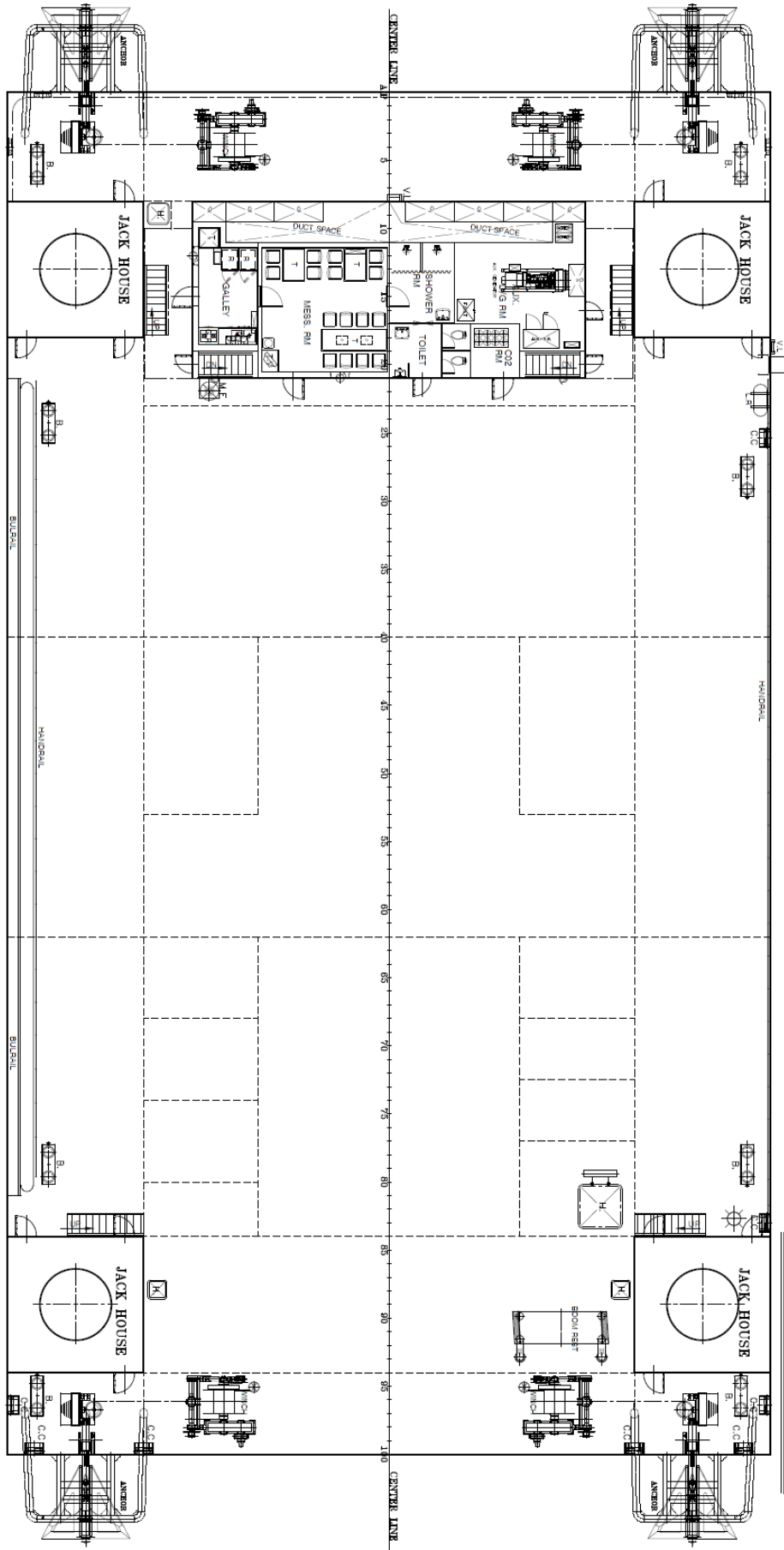
Location

South-America

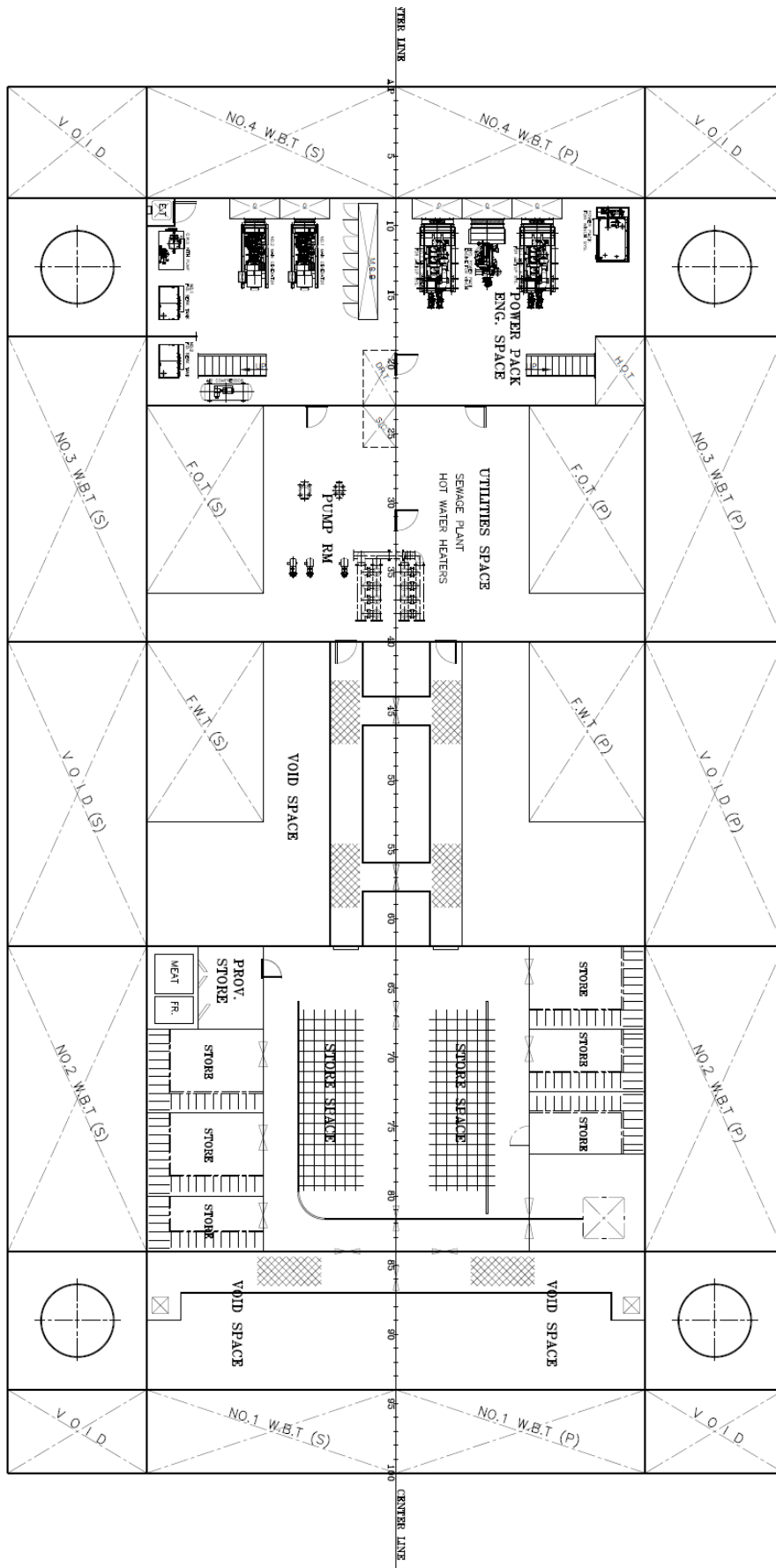




P R O F I L E



UPP. DECK PLAN



HOLD PLAN



"B" DECK

"A" DECK

