



Fully-equipped, good condition floating crane with 2.200 tonnes lifting capacity, 15-pax accommodation and 8 anchor winches to maintain position.

General

Built 2014, Korea
Classification KRS
Flag Panama

Dimensions

LOA 90.00 m.
Beam 45.00 m.
Depth 7.00 m.
Draft 5.00 m. @ 2.200 tonnes
Tonnage Gross 9.205
Nett 2.761

Capacities

Frame spacing 2500 mm

Crane specifications

Type 2x JIB, luffing type
Boom angle 65.0 deg. – normal lifting
Main hook 550 tonnes x 4 sets
Aux. hook 200 tonnes x 2 sets
Lifting capacity 2.200 tonnes
Lifting height (from 87.00 m.
deck)
Outreach (from 29.30 m.
bow)

Deck equipment

Deck crane
Anchor winches 4x fwd + 4x aft
Mooring winches 2x fwd

Accommodation

15 crew (+ 1 spare)

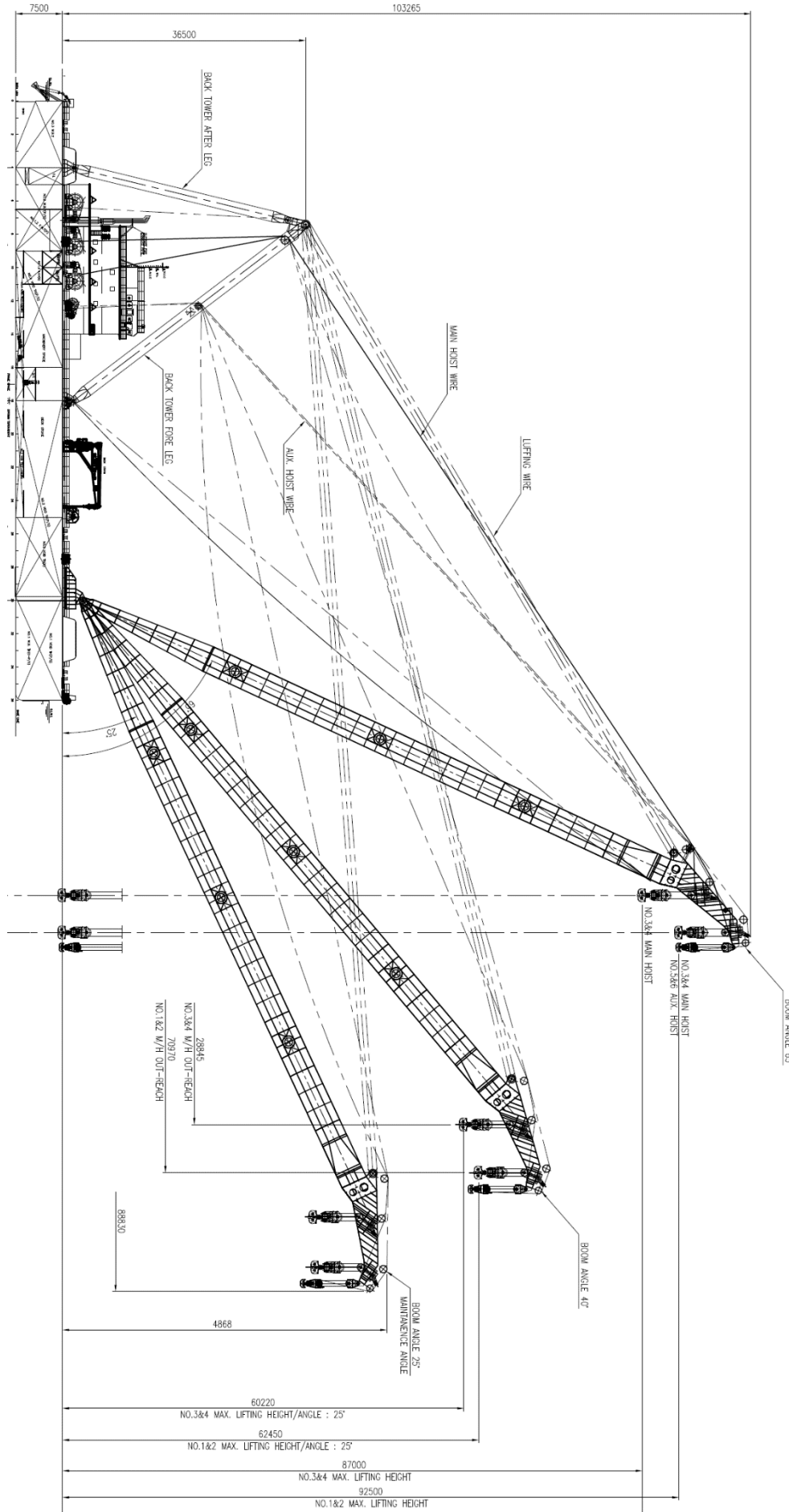
Location

Middle-East





GA PLAN ON NEXT PAGES





LIFTING CAPACITY DIAGRAM

