

Versatile 24-pax Damen FCS 2610 (Mark 2) of high build quality. High-spec built for operation under Australian flag. Ample deck space (95 m2) with 20 tm Heila deck crane and 15 tonne cargo capacity. Main engines as well as both generator sets have been freshly overhauled, and full aircon system renewed inside and out. Vessel will be delivered with fresh 2023 BV certification and complete check-up to ensure the vessel is capable and good-looking for the years to come.

General

Builder	Damen Shipyards
Built	2012
Classification	Bureau Veritas
Notation	1A1 HSLC R1 Windfarm
	Service 1
Hull material	Aluminium

Dimensions

LOA	26.30 m.
Loadline length	23.98 m.
Beam	10.20 m.
Draft	2.20 m.
Tonnage	Gross 81.58 (UK)
	Nett 81.58 (UK)

Capacities

Pax capacity	24 pax motion dampened seats
Deadweight	Up to 20 tonnes
Cargo capacity	15 tonnes
Loading area	90 m ² fwd deckspace
Deck load	1.5 tonnes / m ²

Machinery

Main engines	2x Caterpillar C32 TTA
Output	2.400 hp total
Geaboxes	Reinitjes ZWVS440/1 (two speed)
Generators	2x Caterpillar C2.2
Output	2x 22.5 kW / 28 kVA
Propulsion	2x FPP in kort nozzles
Rudders	2x
Bow thruster	2x hydraulic bow thrusters, 50 kW each, tunnel type

Performance

Speed	25 kn. service speed
	27 kn. top speed
Consumption eco	375 l/hr
Consumption max	420 l/hr
Endurance	1.100 nm



Deck equipment

Deck crane	Heila 20/5S+1PM, capacity 2.75 tonnes @ 8.60 m.
Fenders	RG Seaside heavy-duty bow fender
Fuel hose reel	Below-deck
Container fittings	2x 20 ft

Tank capacities

Fuel oil	22 m ³
Fresh water	1.7 m ³

Communication equipment

GMDSS	
Searchlight	Pesch 1000W 230V
VHF	Sailor RT 6222 DSC
Inmarsat-C	Sailor TT 3000 E
AIS	JRC JHS 182

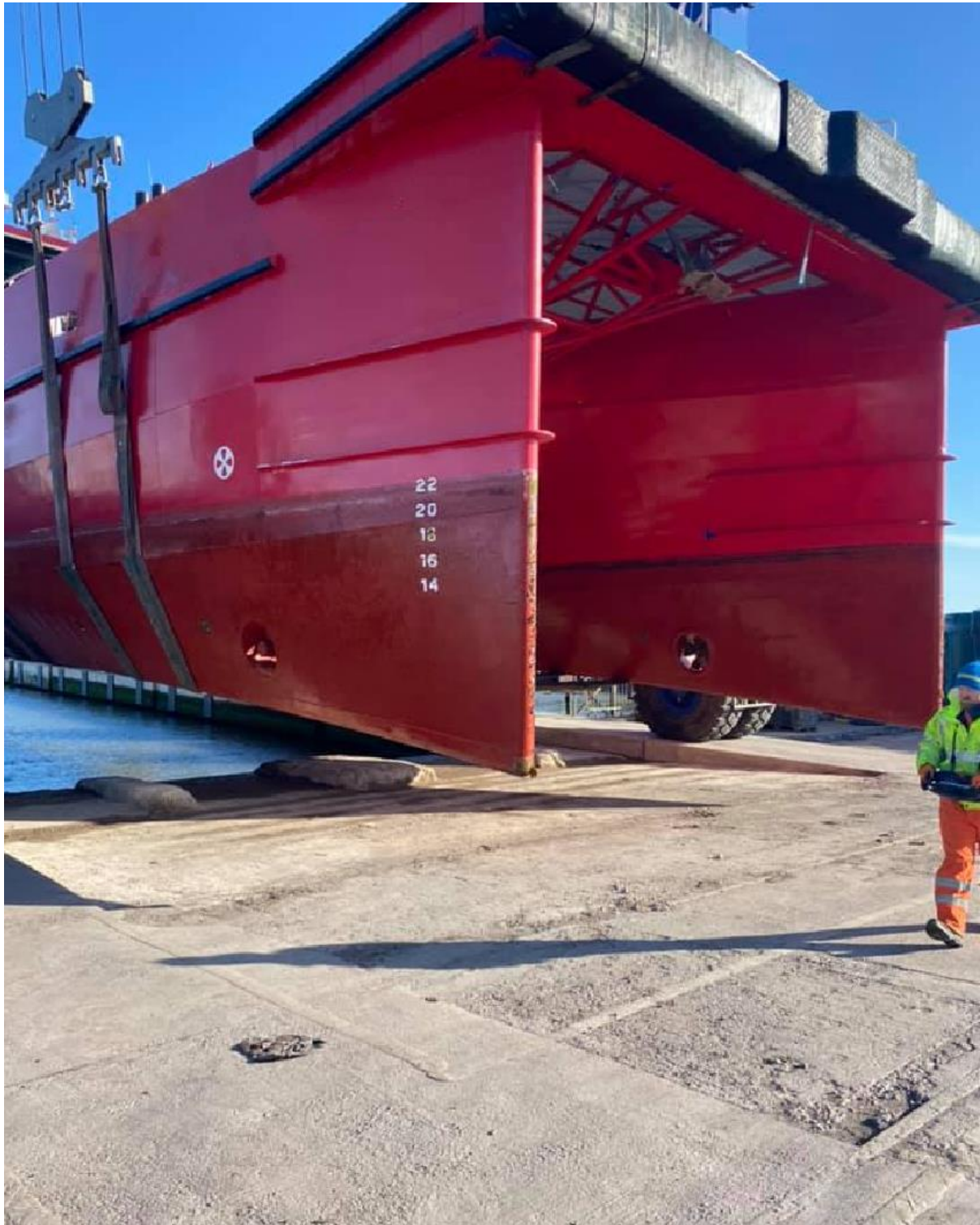
Navigation equipment

Radar	JRC JMA 5212-4 MK2
GPS navigation	JRC JRL-20
ECDIS	Furuno RT 6222 DSC
Echo sounder	JRC JFE-380
Navtex	JRC NCR 333
Magn. Compass	Alphatron MFD
Auto pilot	JRC NT 888G Speed 1500
Anemometer	Maretron
SAR finder	Sea Marshal
CCTV	8x camera deck system, 1x night vision camera

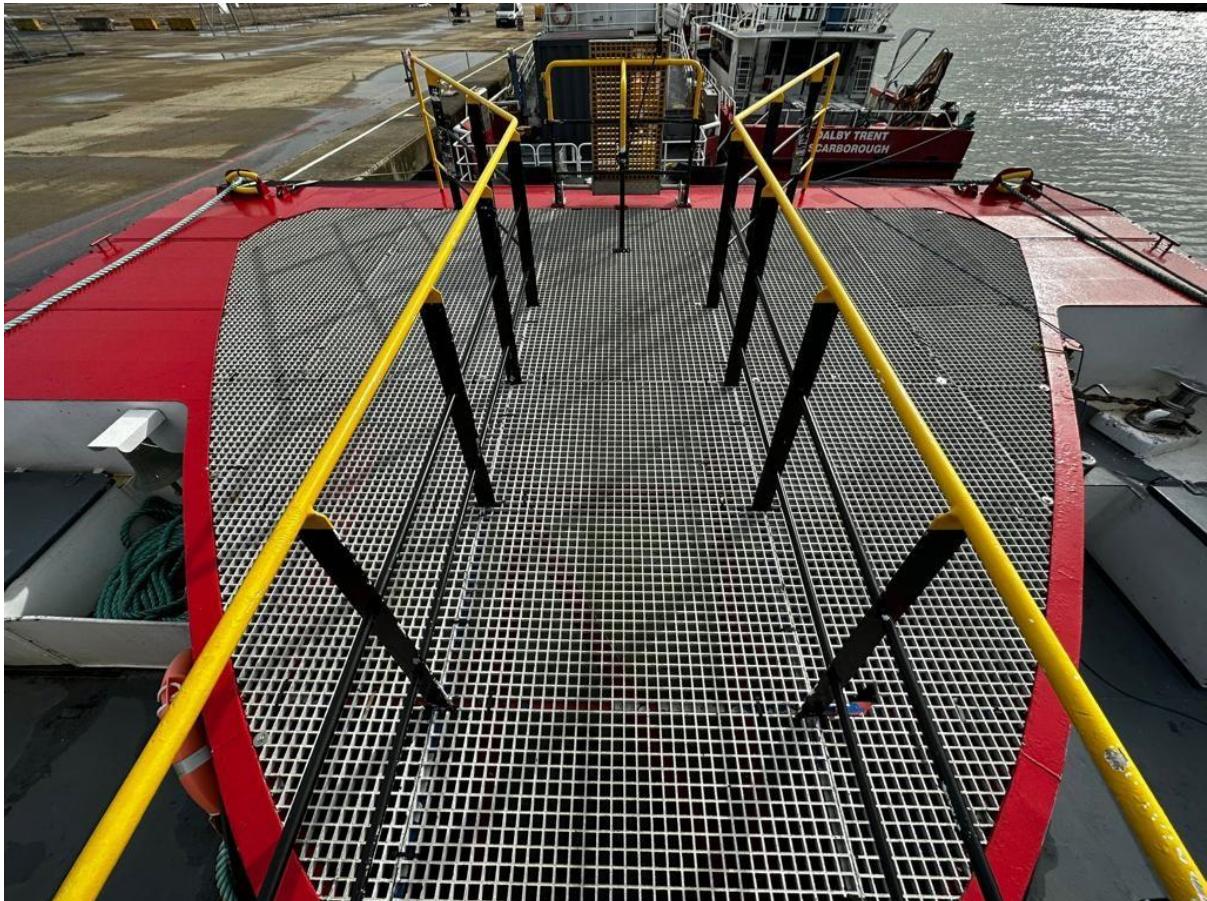
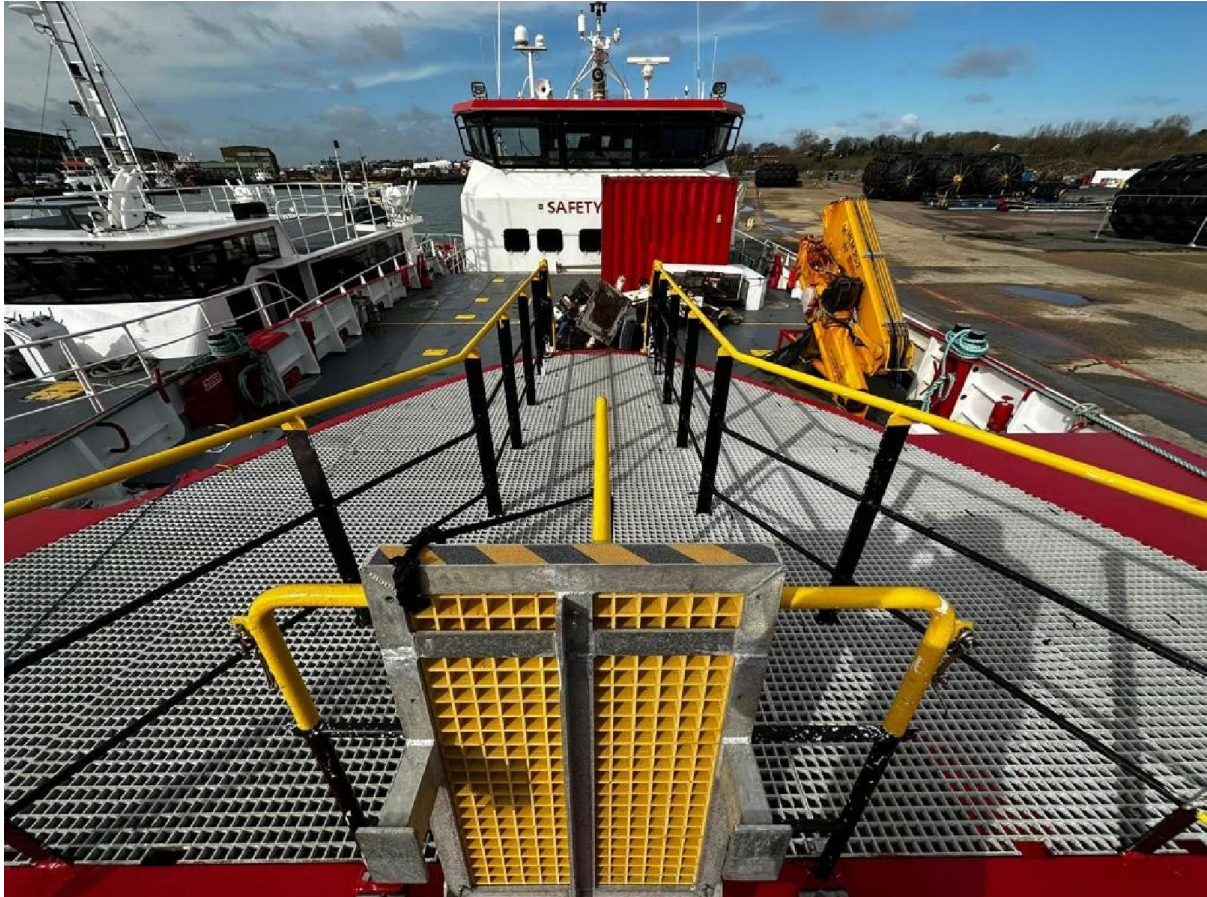
Accommodation

Cabins	2 (can be increased to 4)
Total berths	4 (can be increased to 8)
Galley, toilets and showers on main deck.	
Kitchenette, settee and desk on bridge.	
All spaces heated and air-conditioned.	



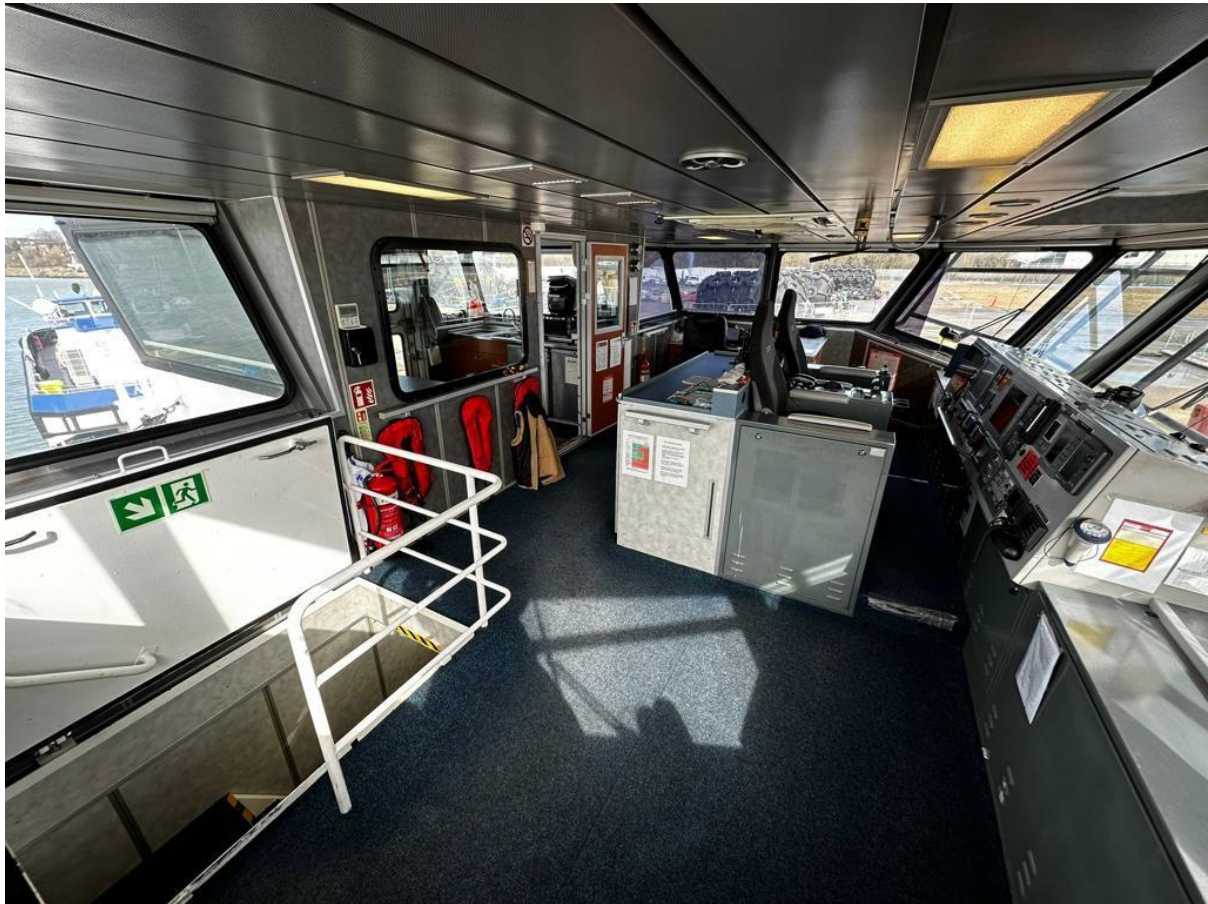








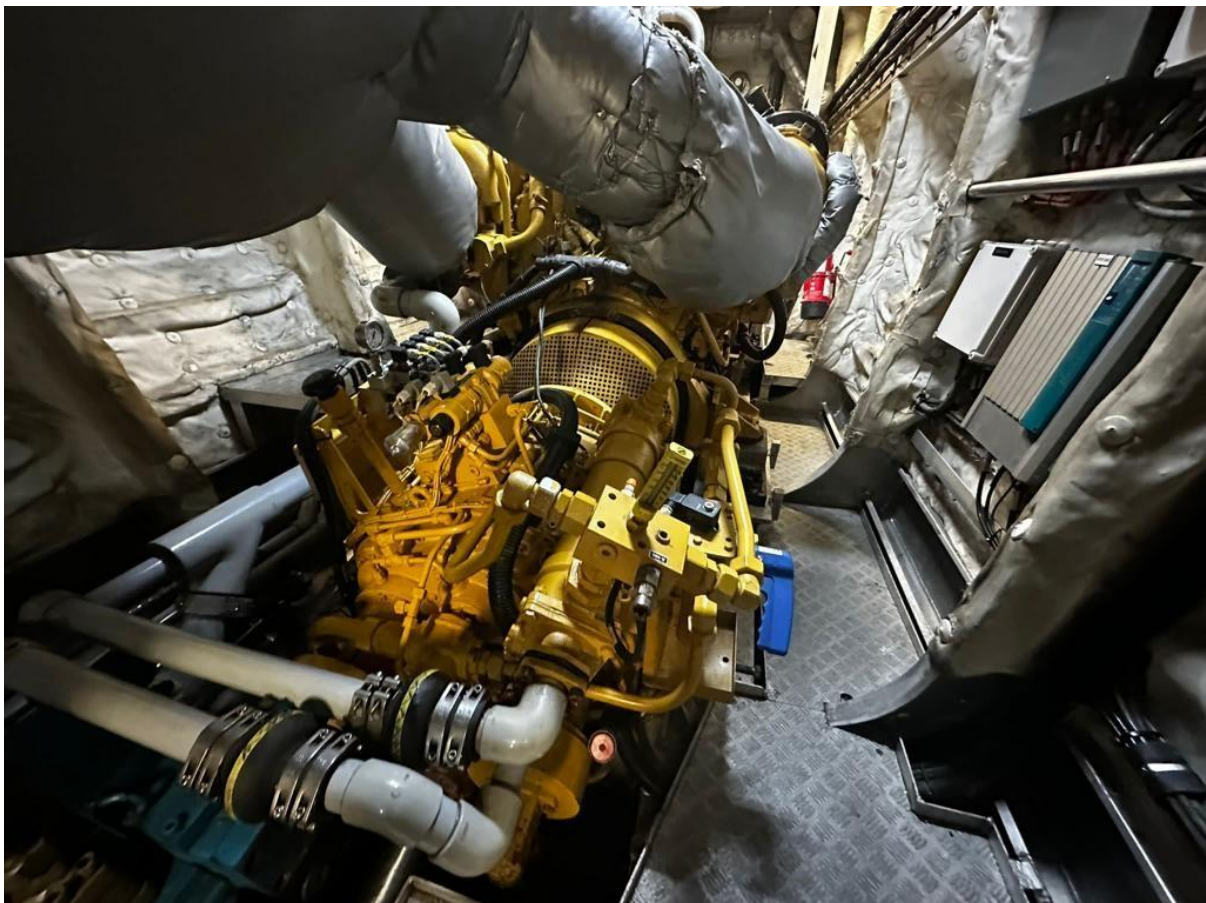


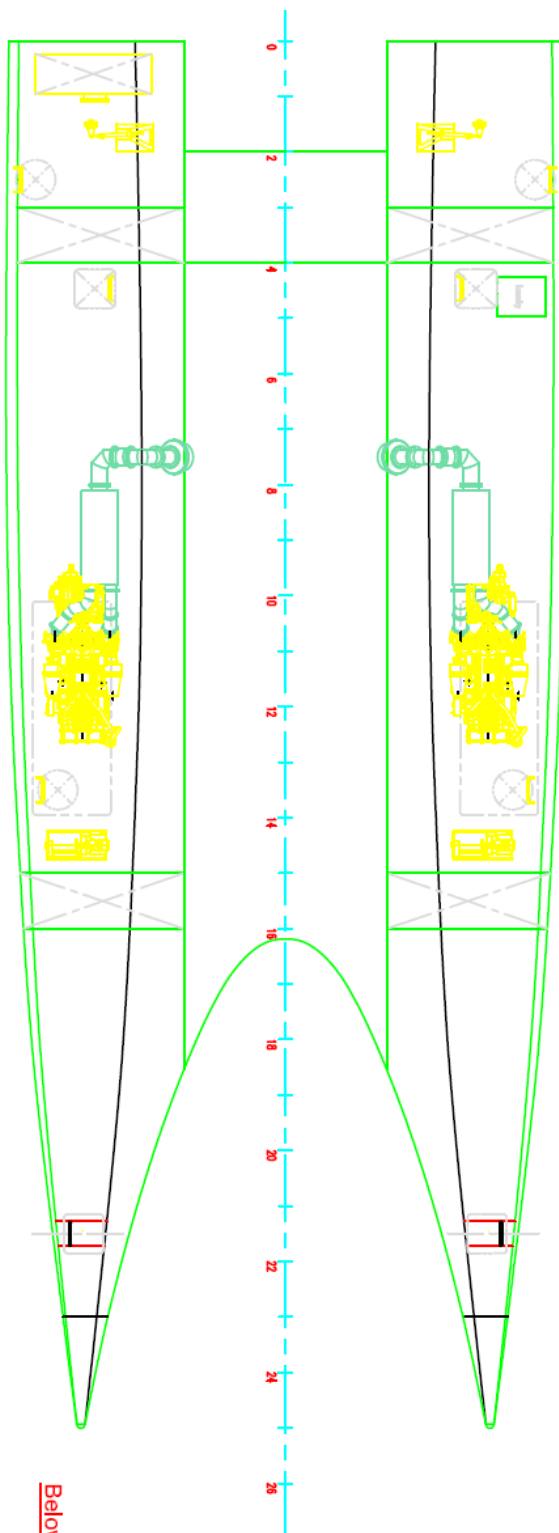




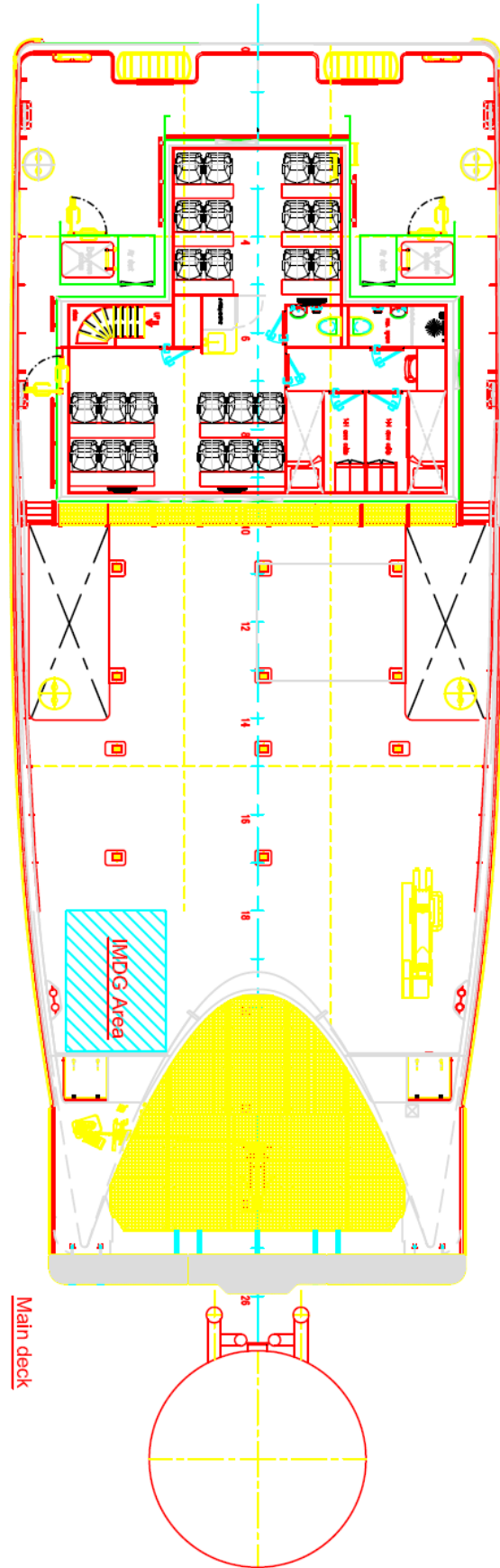








Below maindeck



Main deck

