

Two very well maintained CTV SISTERS, 12 pax seats, capable of ROV/survey duties because of spacious fwd and aft decks and container fittings. Manoeuvrability is ensured by the waterjet propulsion. Vessels are fitted with spacious pax area with all-round visibility, small galley, toilet and shower.

General

Builder	South East Asia Shipyards for Piriou
Design	BMT Nigel Gee
Built	2013
Classification	Bureau Veritas
Notation	I ✕ HULL • MACH Windfarm Service Ship – S1 • AUT UMS sea area 2
Flag	MCA CAT 2A (200 nm)
Construction	Aluminium

Dimensions

LOA	21.58 m.
Beam	7.00 m.
Draft	1.10 m.
Tonnage	Gross 97
	Nett 29

Capacities

Lightship weight	45 tonnes
Cargo capacity	7 tonnes
Pax capacity	12 pax + 3 crew
Loading area	Space for 10 or 16 ft container on aft and fore deck

Machinery

Main engines	2x MAN D2842 LE405
Output	887 hp @ 2.100 rpm each, 1.774 hp total
Gearboxes	2x ZF 2000 series
Ratio	2.032:1
Propulsion	2x Hamilton HM571 waterjets
Generators	Cummins
Output	17 kW, 230V/50Hz

Performance

Speed	25 kn. max @ 280 l/hr
Consumption	550 litres (based on projects 20 nm offshore)
Per 12 hours	
Endurance	38 hrs @ 23 kn, 880 nm

Deck equipment

Deck crane	Optional
Fuel hose reel	yes

Tank capacities

Fuel oil	10 m ³
Fresh water	0.5 m ³
Black water	0.5 m ³

Navigation and communication equipment

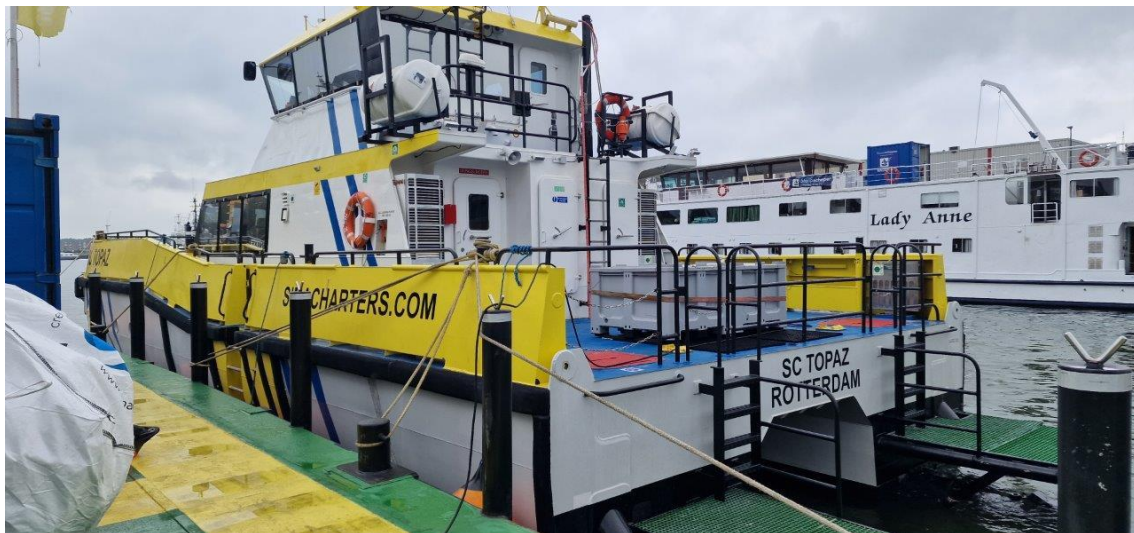
GMDSS	A1+A2
MF/HF radio	Furuno
VHF	Jotron + 2x Ocean Signal
Portable VHF	2x Furuno GMDSS hand-held VHF radios
AIS	Furuno Class A AIS Transceiver + GPS/VHF
EPIRB	Jotron
SART	Ocean Signal
Iridium	yes

Radar	1x Furuno 6kW radar 1x Furuno 12 kW radar
Navtex	1x Furuno GMDSS Navtex
GPS navigation	Furuno GPS receiver
Gyro compass	Furuno Satellite Gyro Compass
Auto pilot	Navitron autopilot
Anemometer	Furuno wind system
CCTV	7-camera CCTV system

Accommodation

Cabins	2
Total berths	2 (optional 4)









SIMA SHIPBROKERS
commercial vessel trading

REF: SSB-1026
(2 SISTERS) CATAMARAN CTV/SURVEY VESSELS

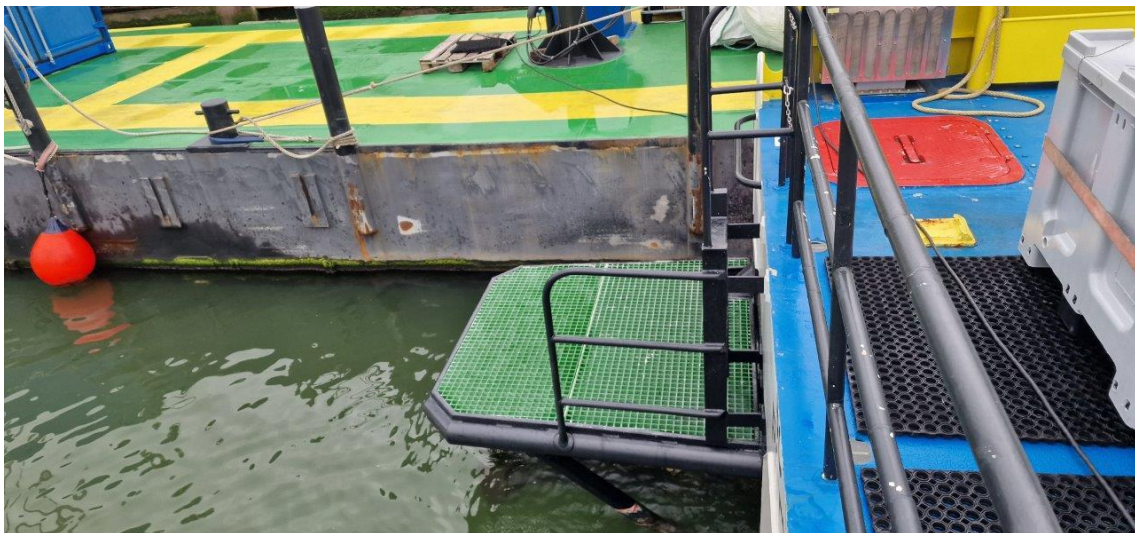


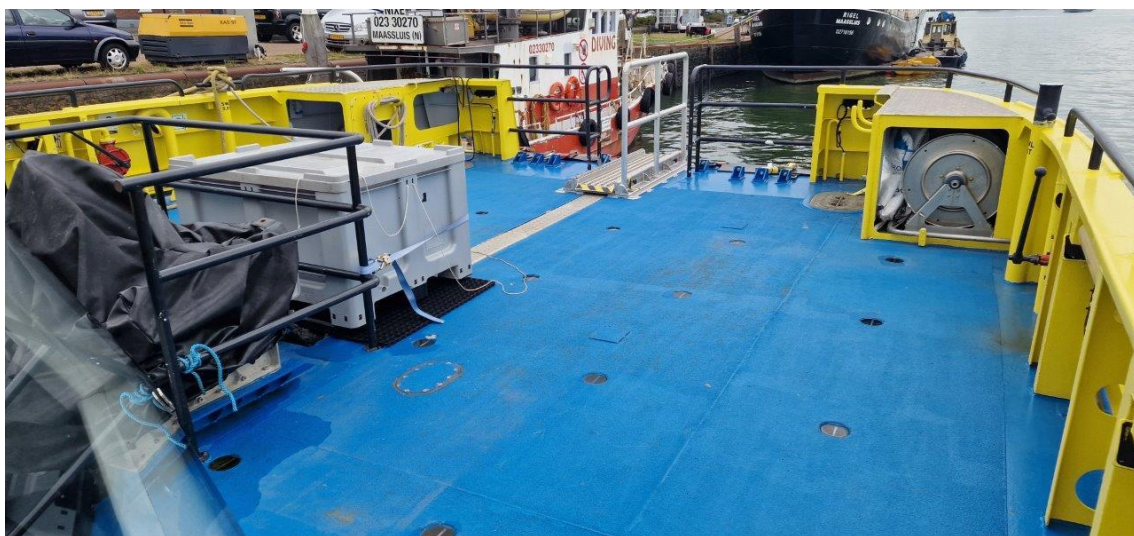
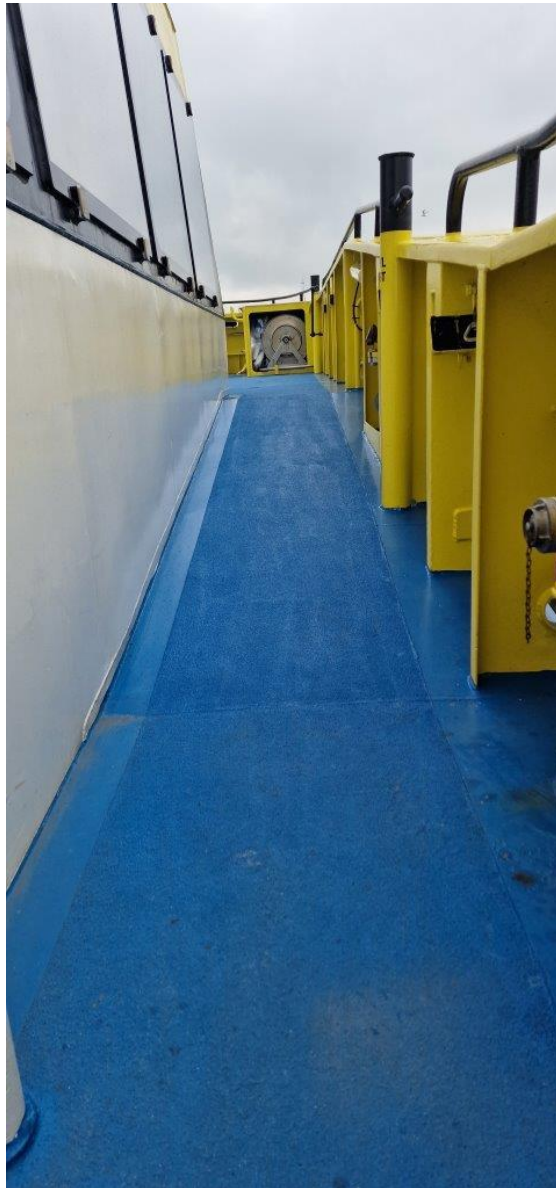


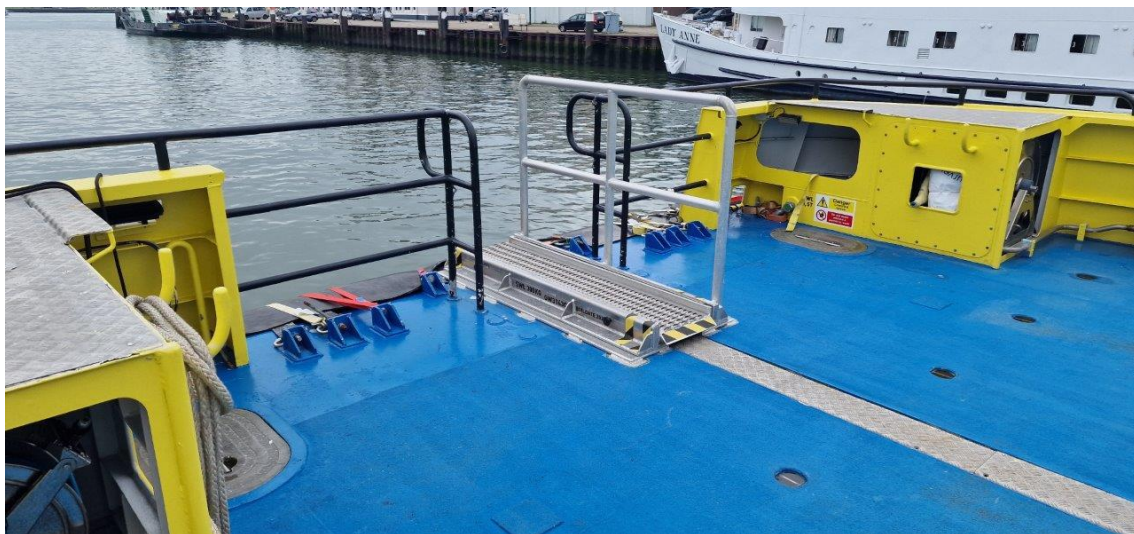
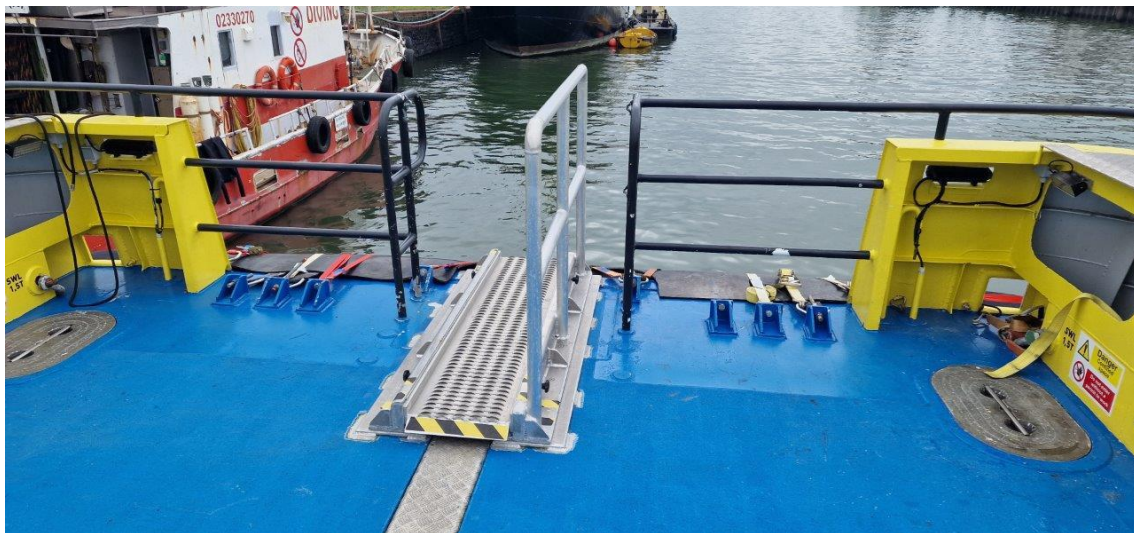


SIMA SHIPBROKERS
commercial vessel trading

REF: SSB-1026
(2 SISTERS) CATAMARAN CTV/SURVEY VESSELS





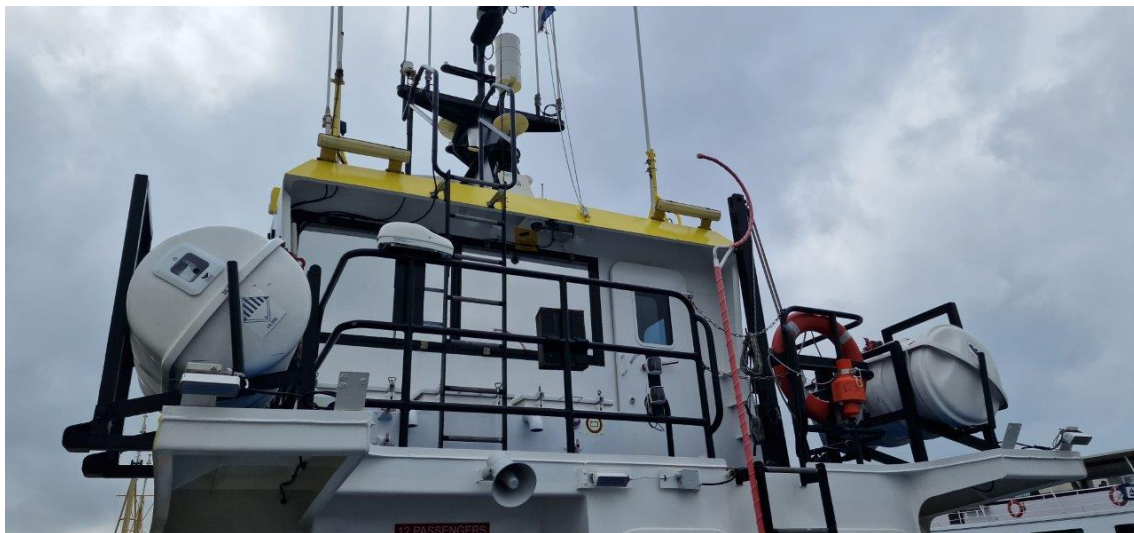




SIMA SHIPBROKERS
commercial vessel trading

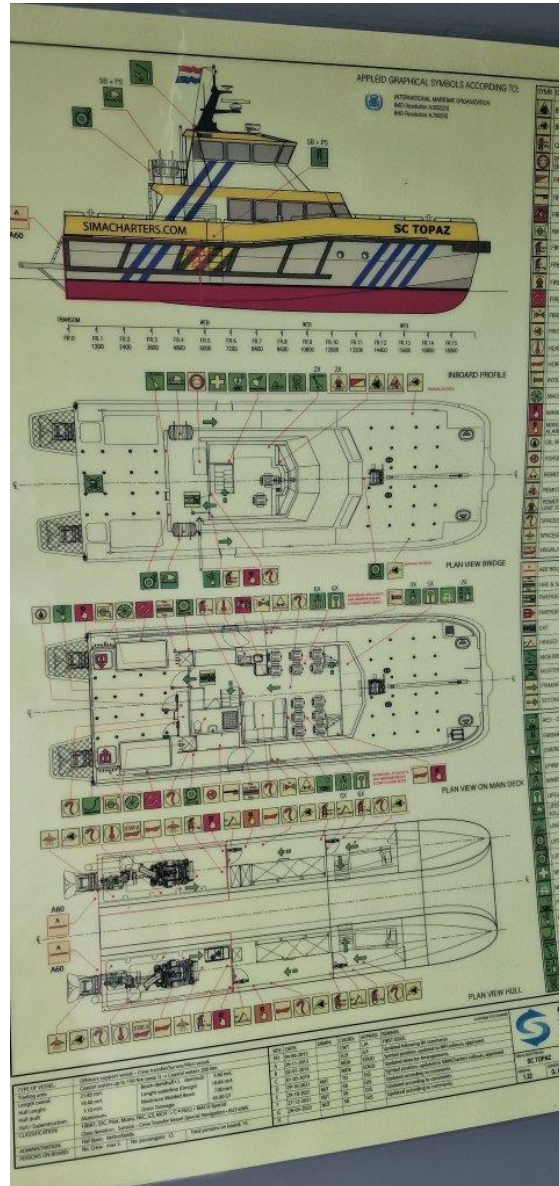
REF: SSB-1026
(2 SISTERS) CATAMARAN CTV/SURVEY VESSELS

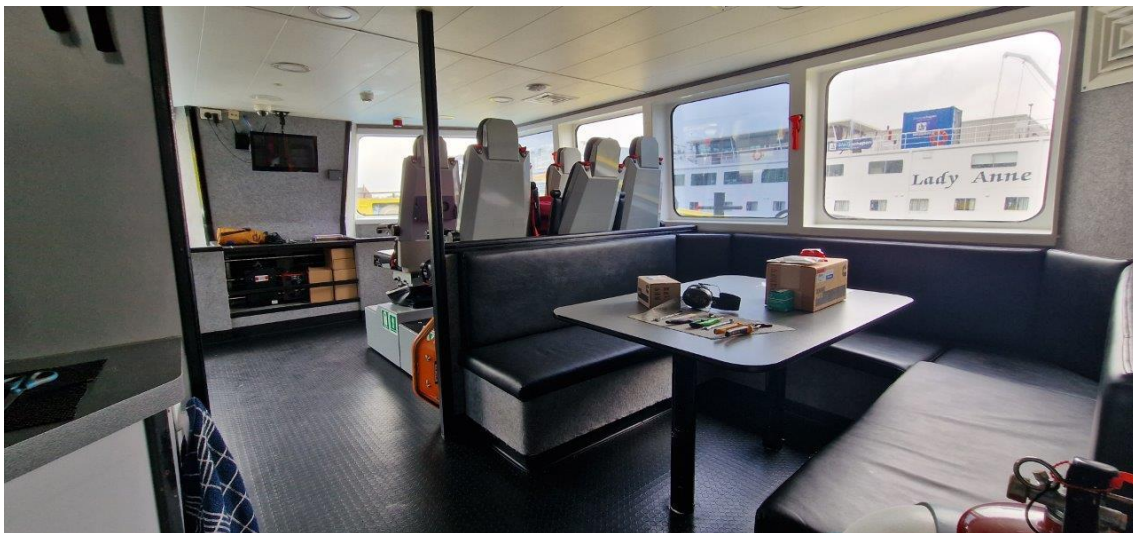


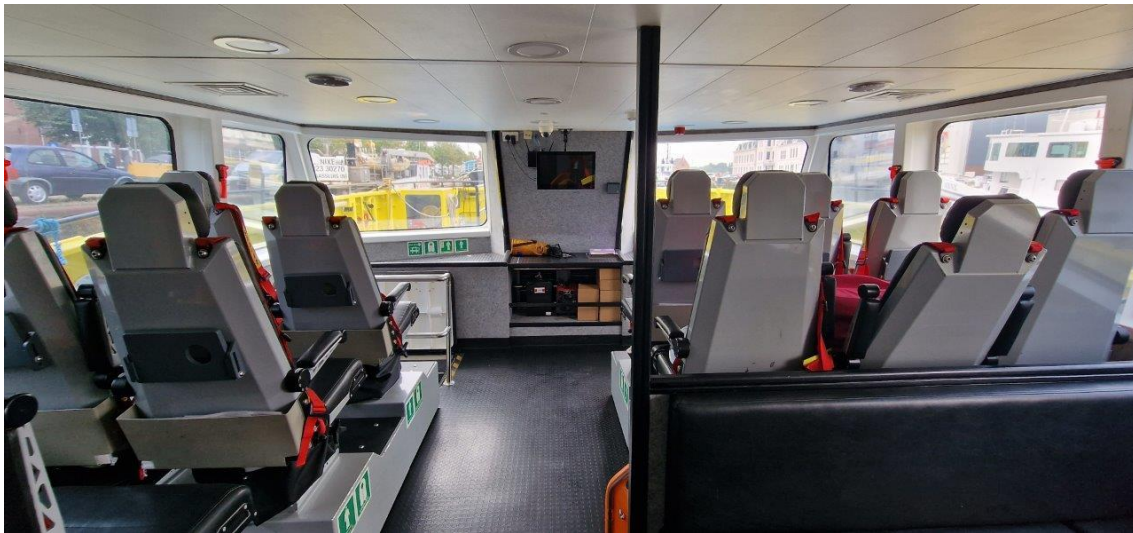


















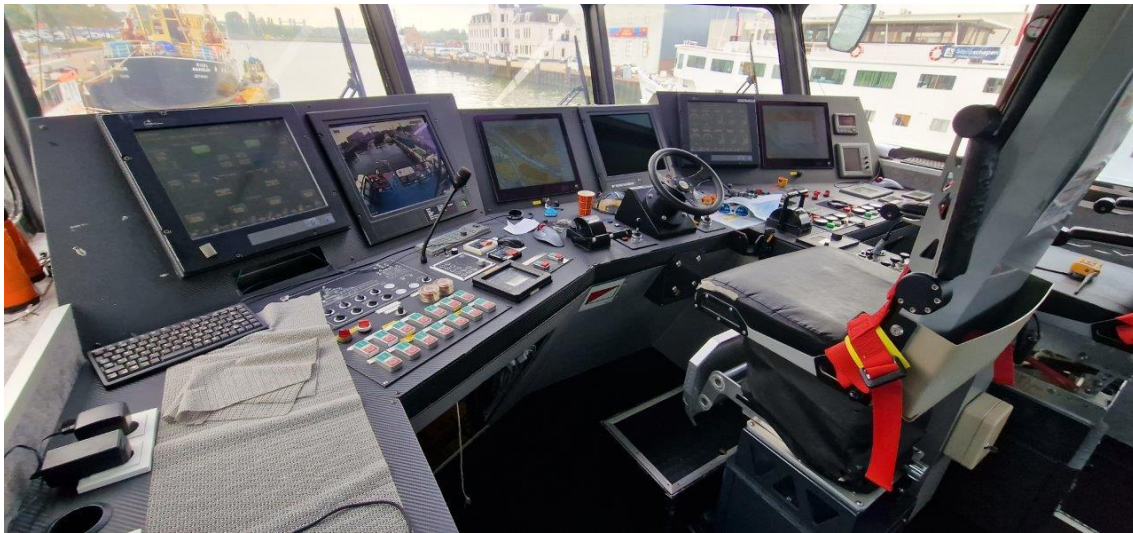


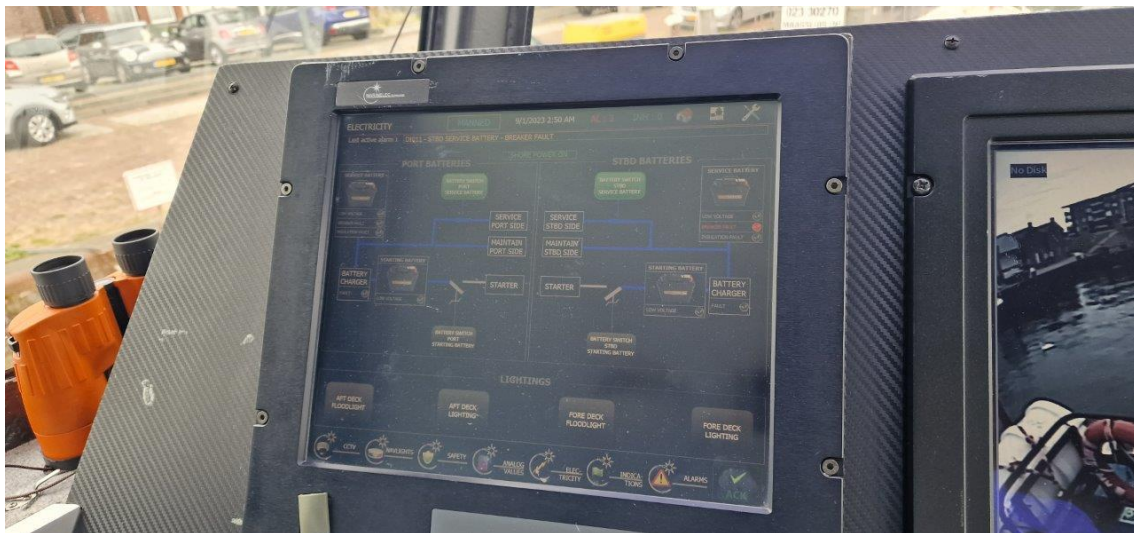


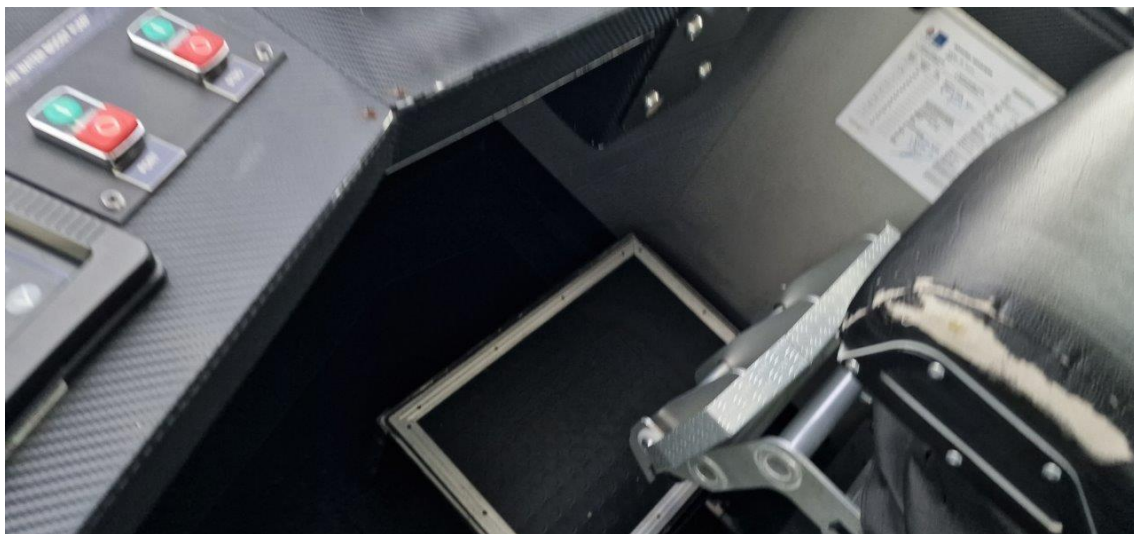




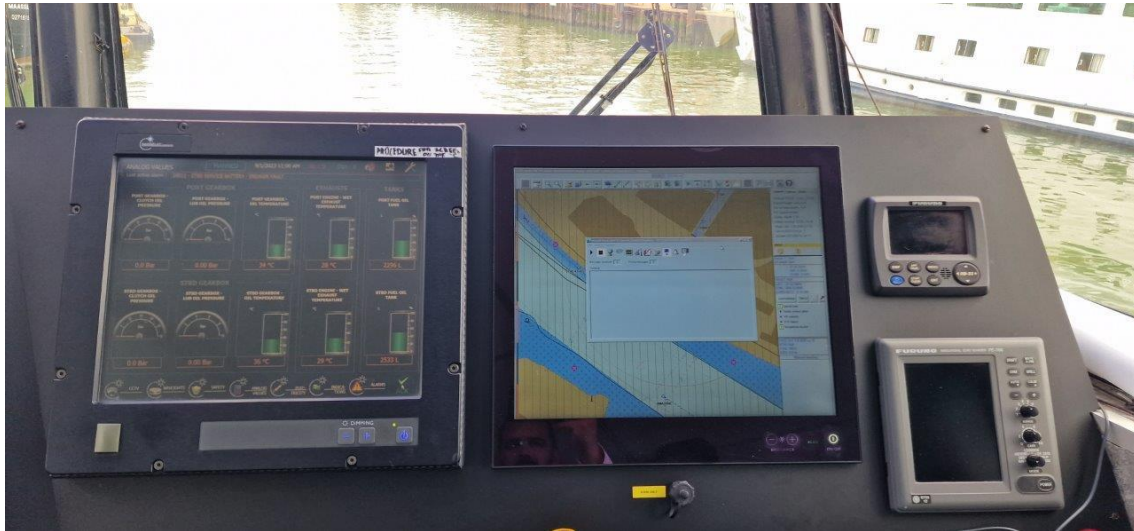












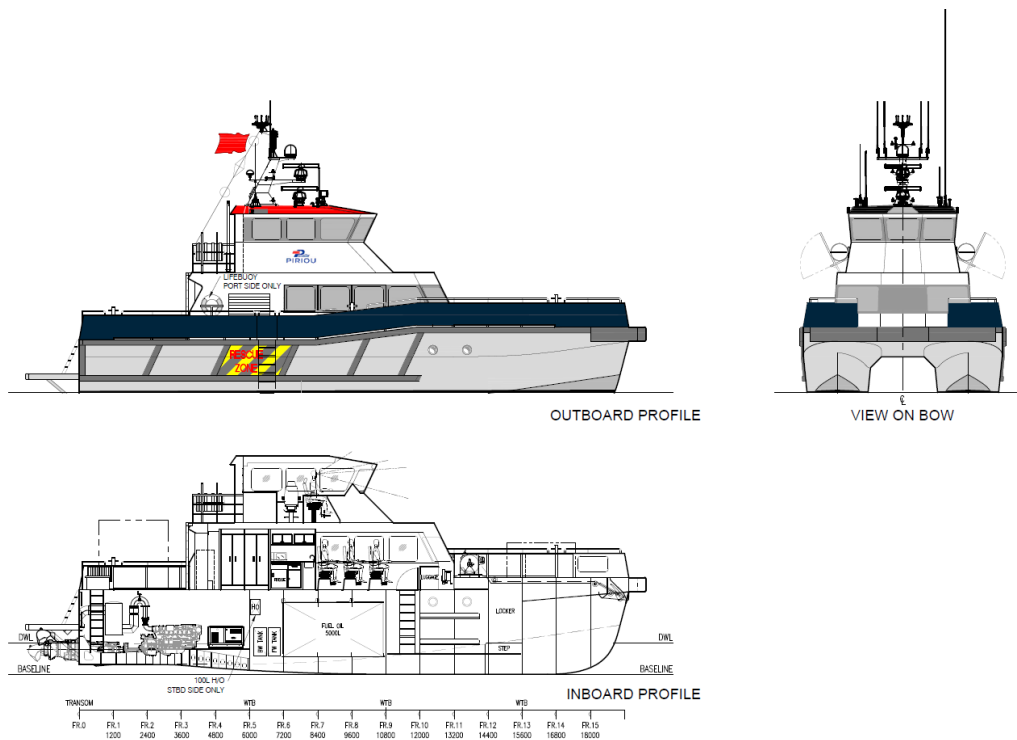


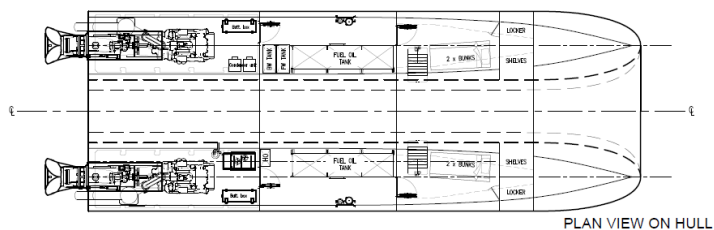
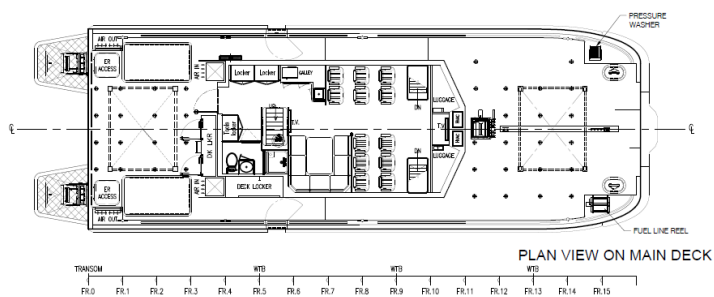
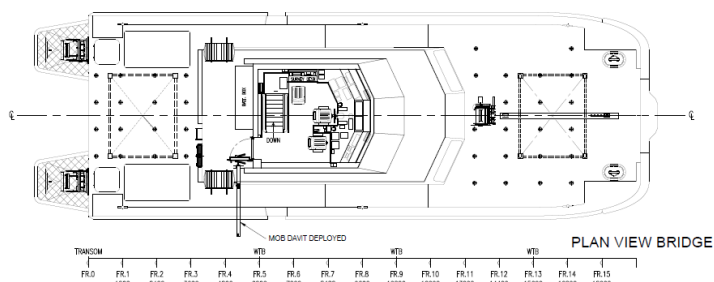
SIMA SHIPBROKERS
commercial vessel trading

REF: SSB-1026
(2 SISTERS) CATAMARAN CTV/SURVEY VESSELS









PRINCIPAL PARTICULARS

LENGTH OVERALL:	21.85 m
HULL LENGTH:	19.4 m
LENGTH WATERLINE (DESIGN):	18.84 m
MAXIMUM MOULDED BEAM:	7.0 m
HULL DRAFT:	1.1 m
PASSENGER CAPACITY:	12 PAX + 3 CREW
BERTHS:	4
FUEL CAPACITY:	10,000L
FRESH WATER CAPACITY:	500L
BLACK WATER CAPACITY:	500L
MAIN ENGINES:	MAN D2842 LE405 662kW @ 2100 RPM
PROPULSION:	2x HAMILTON HM571
MAX DEADWEIGHT:	15 TONNES

CLASS: BUREAU VERITAS + HULL MACH
Wind Farms Service Ship - S1



SEAS
SHIP MANAGEMENT

Rev	Date	As Built	Modifications	SEAS	JA	ISSUED TO	Status
1	13/03/13						

Customer Dwg No. GP11_1_000_01	Chkd By: LARC	Chkd Date: 13/03/13
Dwg No: NG883 - 601-00-01	Issue D	Sheet 1 of 1
Drawn By: MDX	Scale: 1:75 @ A1	Print Date: 13/03/13