

Newbuild inland / river going push barges for sale, with hatches.

Built in China with good quality, overseen by Dutch professionals. These barges are optimized to reduce fuel consumption.

All barges have an optional exploitation contract in the Netherlands, which will help buyers attracting finance.

The barges will be built under Bureau Veritas Inland – Rhine.

First barge ready for delivery ex-yard China in June 2024.

General

Builder	Chinese yard
Built	NEW BUILT
Classification	LR + NBKB (European inland certification acc. to ES-TRIN)

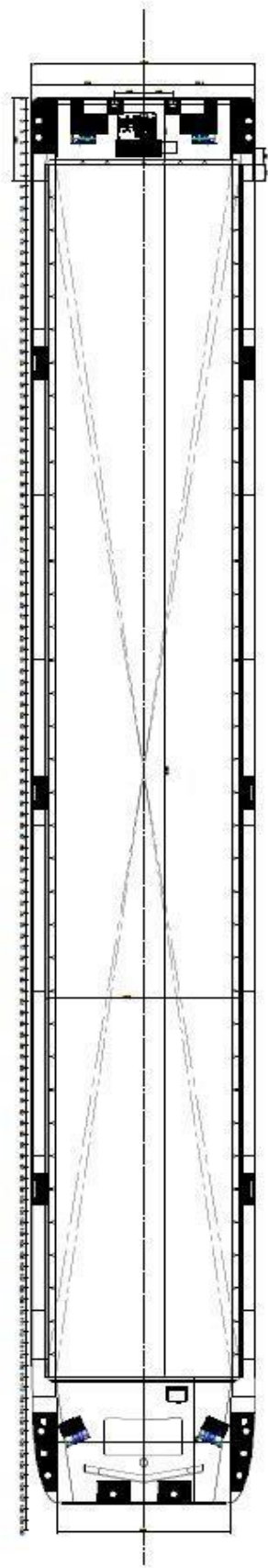
Dimensions

LOA	90.00 m.
Beam	11.45 m.
Depth	4.25 m.

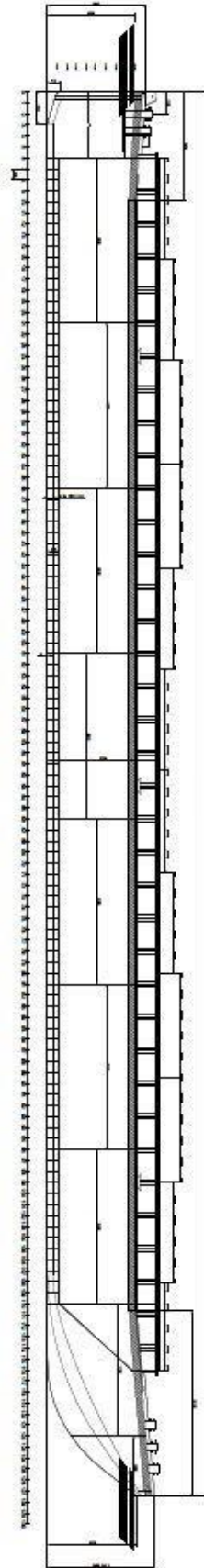
Capacities

Cargo capacity	3.700 tons / ca. 4.400 m ³
----------------	---------------------------------------





Boven aanzicht



Zij aanzicht