



*Newbuilt under construction Aquaculture Service Vessel. Built primarily for the Norwegian market under the Nordic Boats Standards (NBS), this versatile and stable platform is very well suited for fish farms and construction works. Delivery time max 6 months after signing.*

**General**

Location	East-MED
Built	2024 (UNDER CONSTRUCTION)
Classification	NBS (Nordic Boats Standards)
Notation	As per DNV-GL – ST-0342 Craft Rules

**Dimensions**

LOA	14.95 m.
Beam moulded	10.00 m.
Depth moulded	3.40 m.
Draft design	1.60 m.

**Capacities**

Deadweight	35 tonnes
Deck area	50 m <sup>2</sup>

**Machinery**

Main engines	2x Doosan L086TH
Output	2x 250 hp @ 2.100 rpm
Gearboxes	2x Dong-I, DMT136H, ratio 3,46:1, with PTO and Trolling
Generators	2x Doosan Infracore with Mecc Alte generators
Output	88 kVA @ 1.500 RPM, 230 VAC, 50 Hz
Propulsion	2x 4-blade Fixed-Pitch

Rudders	2x rudders
Bow thruster	1x 52 hp, hydraulic, Sleipner SP 550 (P42)

**Performance**

Speed	9 knots
-------	---------

**Deck equipment**

Deck crane	1x TLG 54000 Tk8, knuckle type, 54 tm. (2120 kg @ 16 m.)
AH/towing winch	1x 5 t. single drum (optional)
Capstan	1x 1 t. with foot pedal

**Tank capacities**

Fuel oil	6.4 m <sup>3</sup>
Fresh water	6.8 m <sup>3</sup>
Sewage	1.0 m <sup>3</sup>
Ballast water	4.8 m <sup>3</sup>

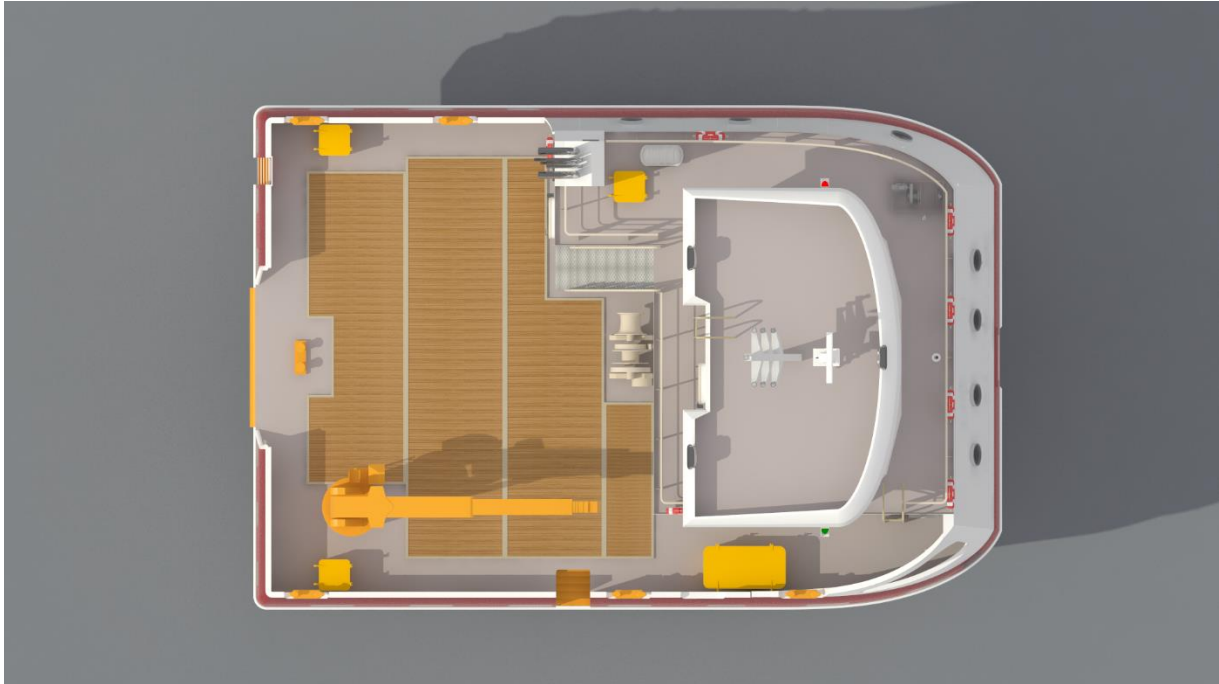
**Communication equipment**

As per GMDSS:	
SART, EPIRB, VHF	
1x marine radar	
1x Echosounder	
1x GPS/chart plotter	
1x autopilot	

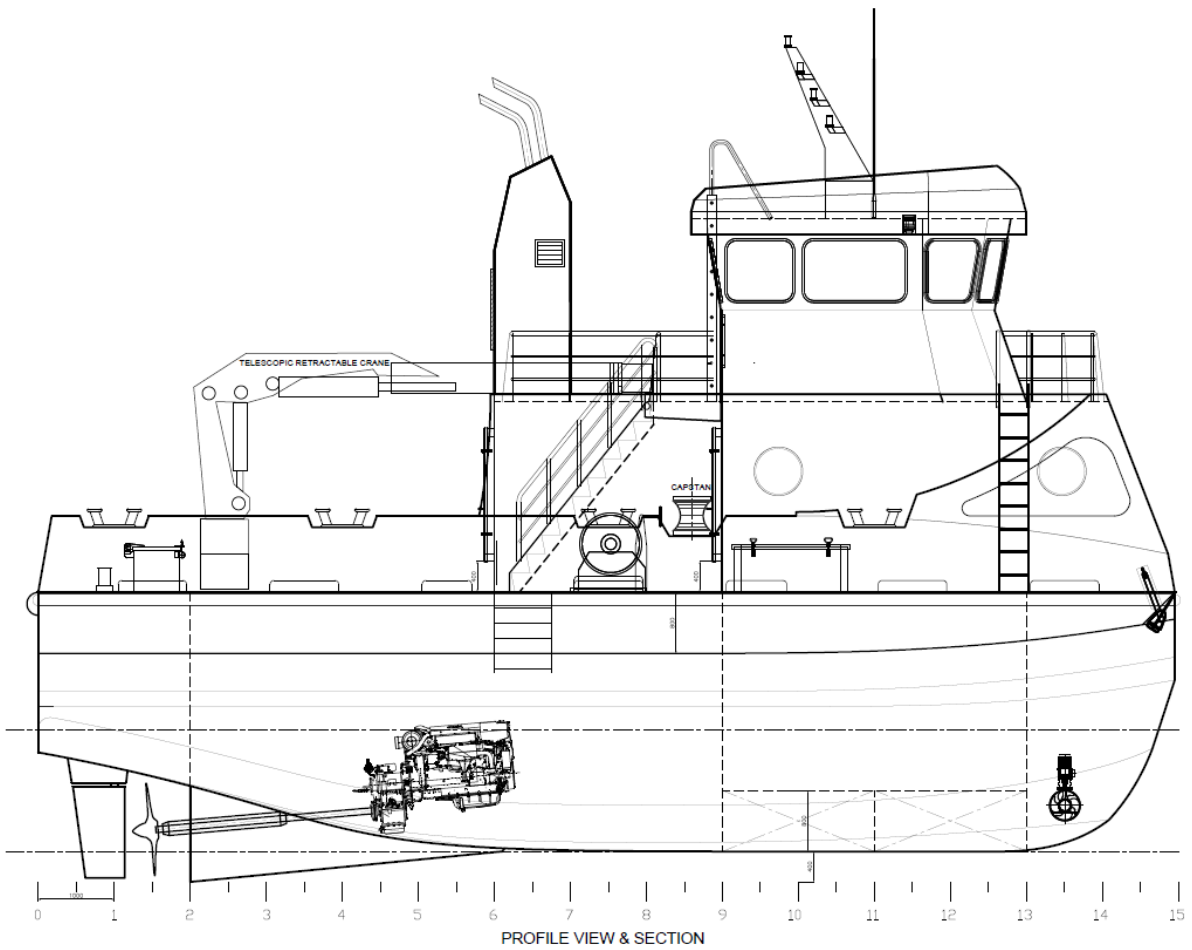
**Accommodation**

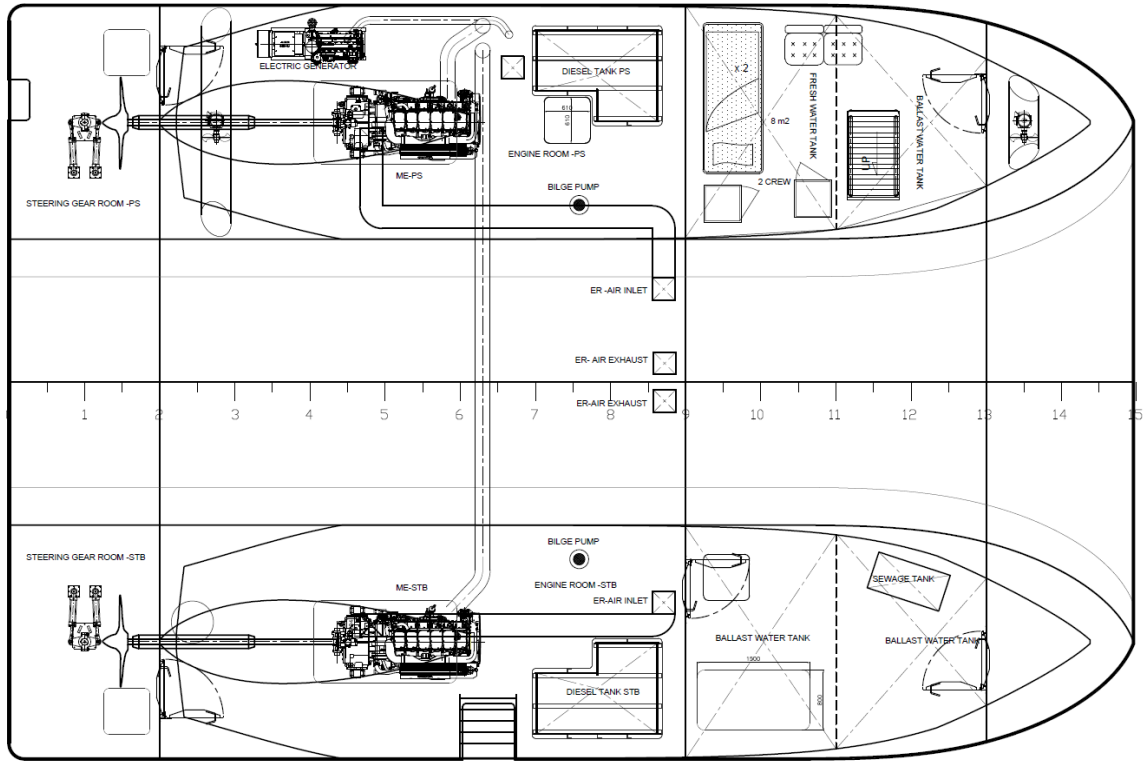
Comfortable accommodation with floor heating and insulation for Nordic climates. Galley and mess room.	
Cabins	1 single 2 double
Total berths	5 total



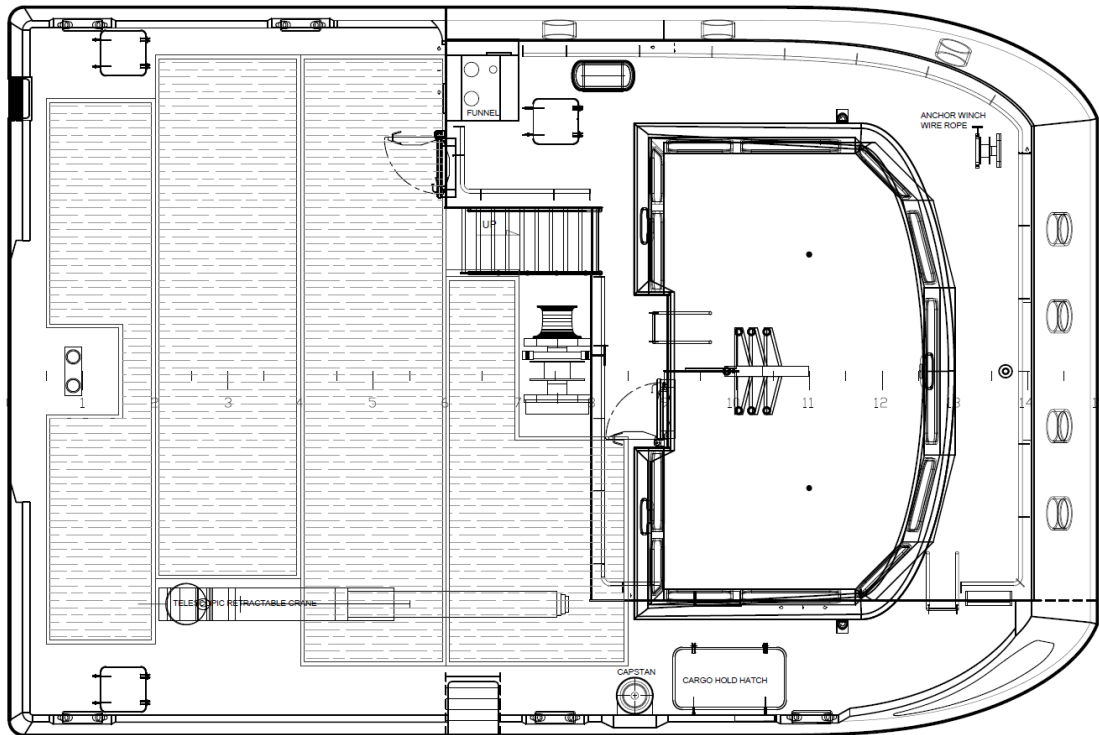




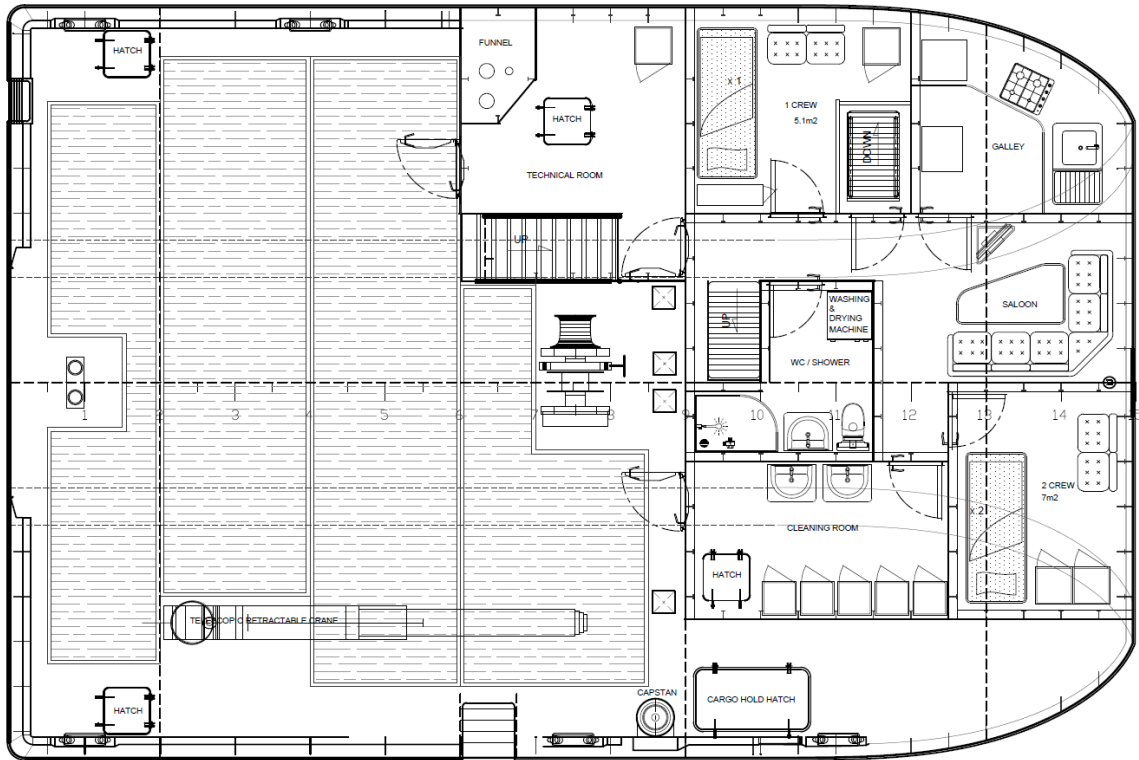




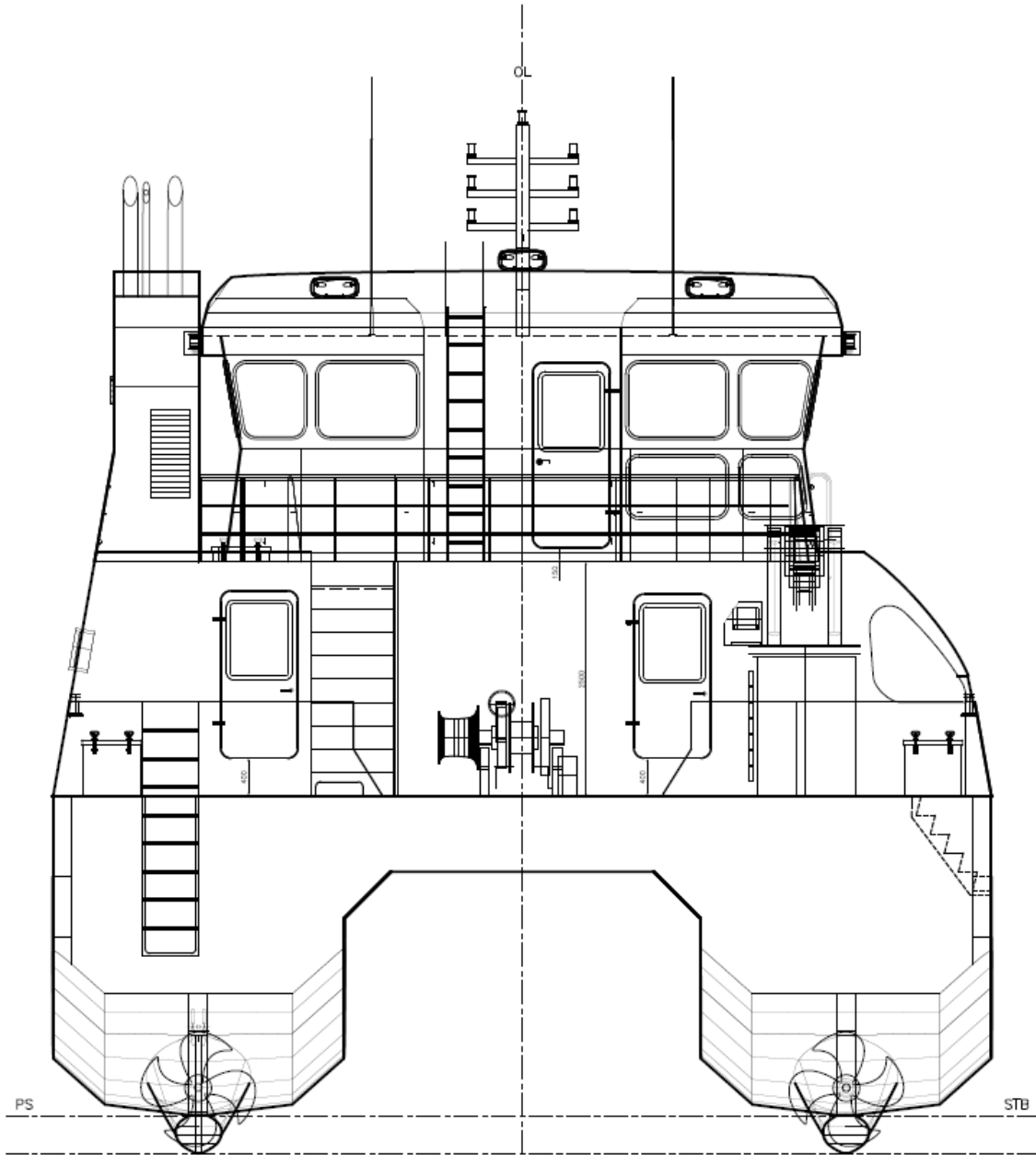
BELOW MAIN DECK (800 MM AB FR BL)



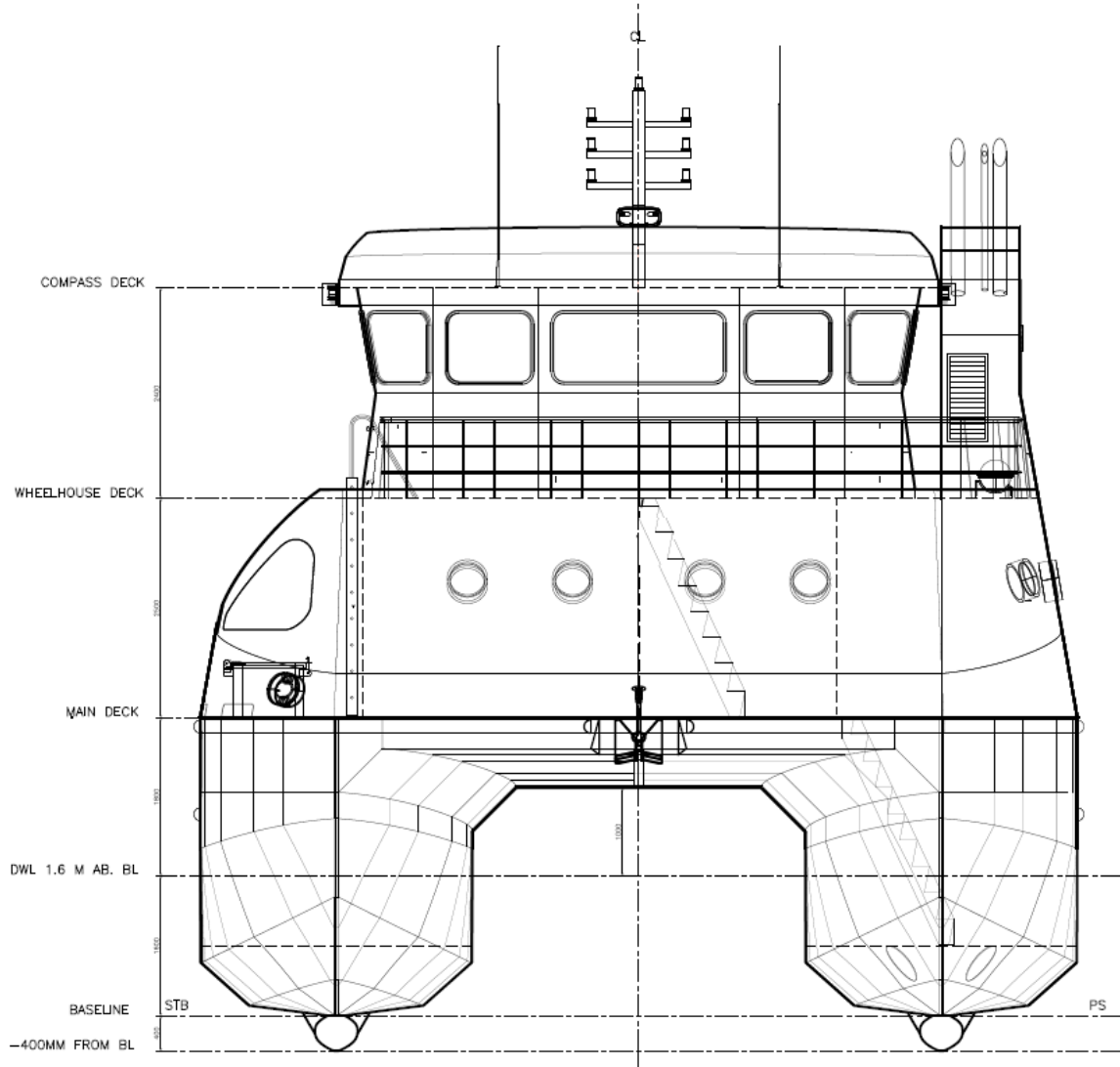
LOOKING FROM TOP



ABOVE MAIN DECK



AFT VIEW



FRONT VIEW