

35 tbp Voith-Schneider tractor tugboat, spacious interior with 8 bunks in 7 cabins. Fully classed with ABS and recently drydocked; vessel is in extremely well-maintained condition, and even fitted with a sauna. Full-LED lighting all-around. Great to operate in ports, or alternatively a great platform for yacht conversion.

General

Builder	H.H. Bodewes B.V., the Netherlands
Built	1976
Classification	ABS
Notation	✱ A1 E Towing Service ✱ AMS, Unrestricted Service
Flag	The Netherlands/Dutch

Dimensions

LOA	32.29 m.
Beam	9.20 m.
Draft (min/max)	4.60 – 5.83 m.
Tonnage	Gross 292
	Nett 87

Machinery

Main engines	2x Stork Werkspoor 9FDHD 240
Output	3.000 hp/ 2.208 kW total @ 1000 rpm
Generators	2x DAF DK1160A
Output	95 kVA each
Propulsion	2x Voith-Schneider 28G

Performance

Speed	11.5 kn.
-------	----------

Bollard pull	35 tbp
--------------	--------

Deck equipment

Deck crane	
AH/towing winch	Norwinch S-400-2T-2 double drum, with warping head Towing wire: 700 m. at 40 mm diam Towing wire 2: 70 m. at 70 mm diam.
Towing hook	Mampaey
Firefighting	300 m3/hr @ 10 bar

Tank capacities

Fuel oil	91.4 m ³
Fresh water	12.5 m ³

Communication equipment

GMDSS	GMDSS A1
VHF	2x
AIS	yes

Navigation equipment

Radar	Furuno SAIT RHRS-2002R JRC 20 JMA 6132
Echo sounder	Simrad E.Y.
Navtex	yes
Gyro compass	Arma Brown MK 10
Auto pilot	Navitron NT 921 G
Electronic charts	Transas Navigator Pro

Accommodation

Cabins	7
Total berths	8





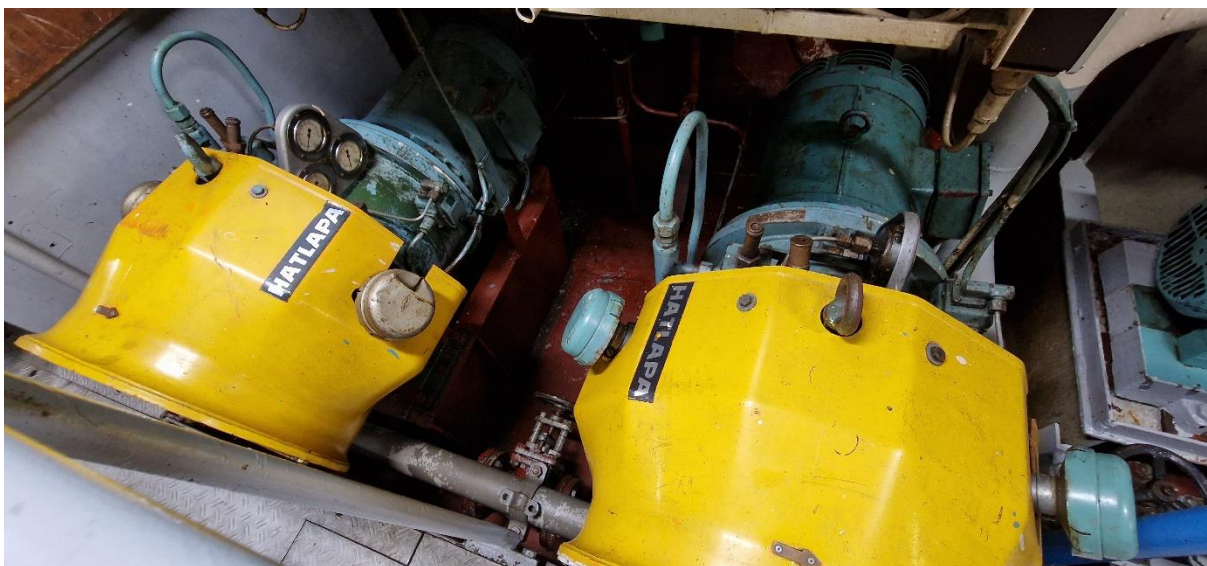


SIMA SHIPBROKERS
commercial vessel trading

REF: SSB-1028
VSP / VOITH-SCHNEIDER TRACTOR TUG









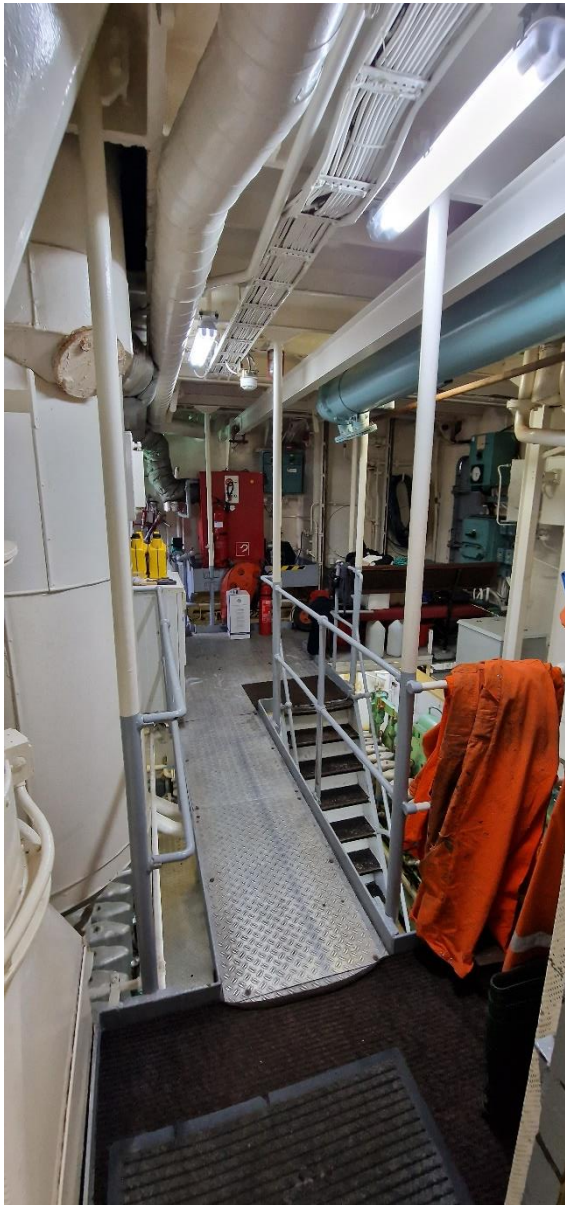
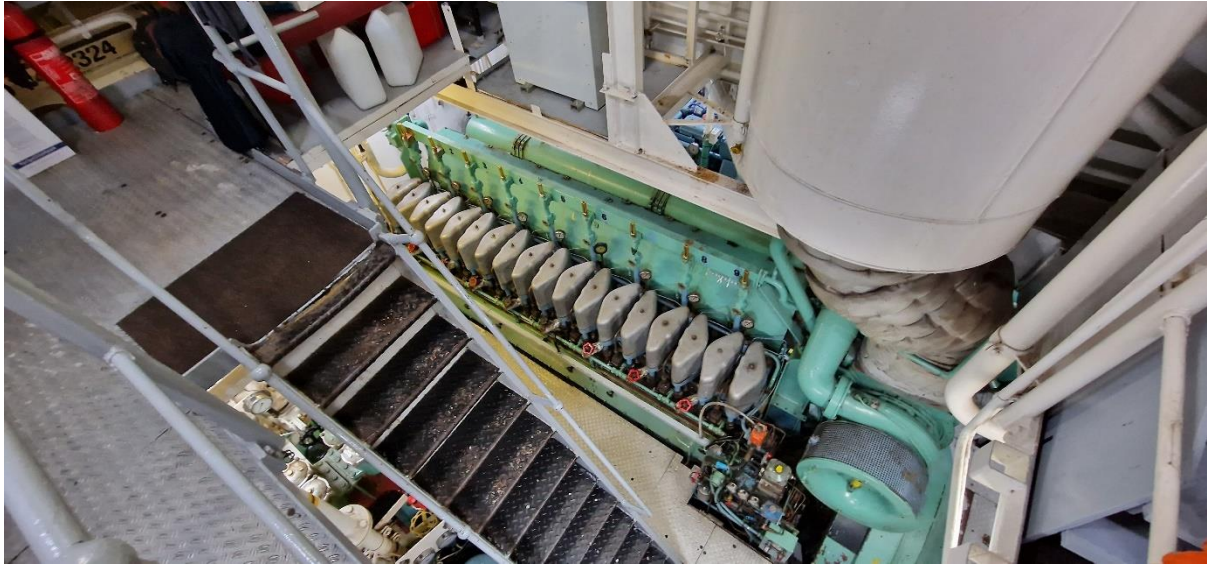








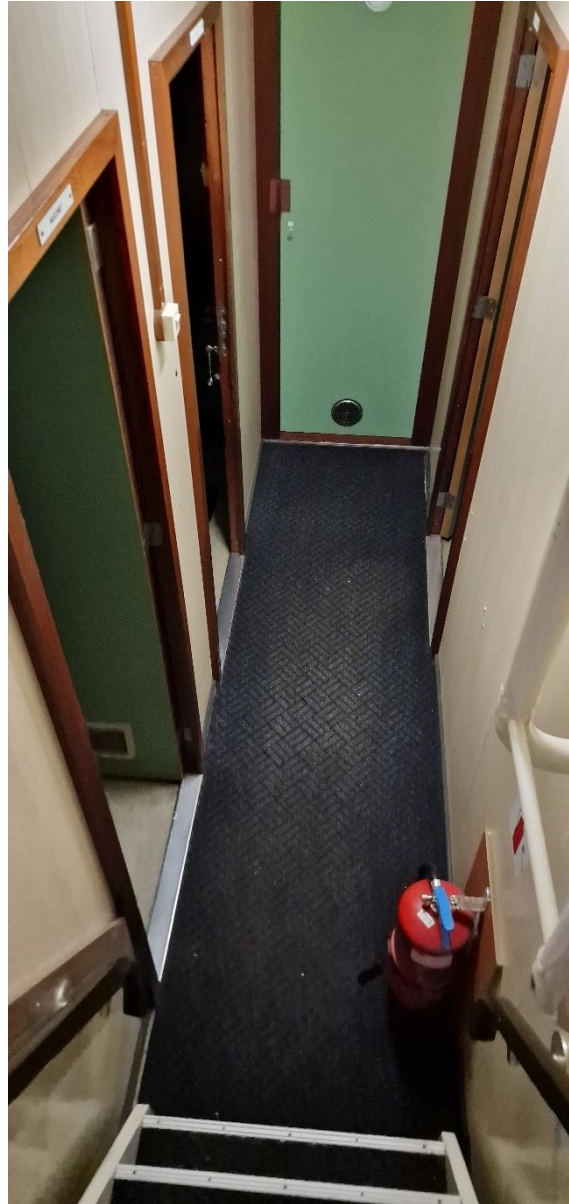






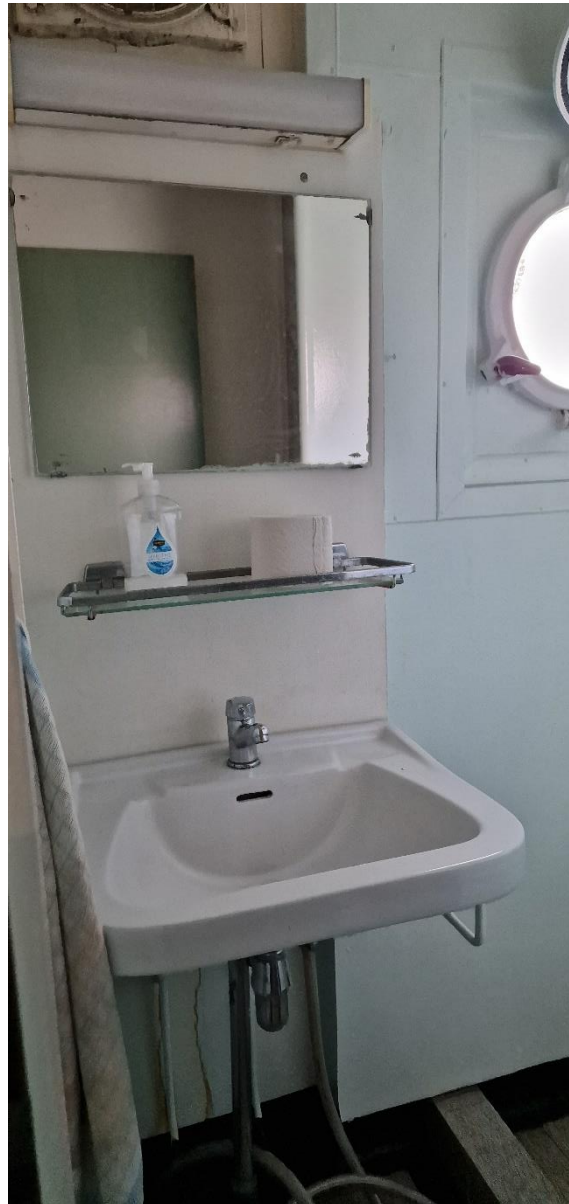


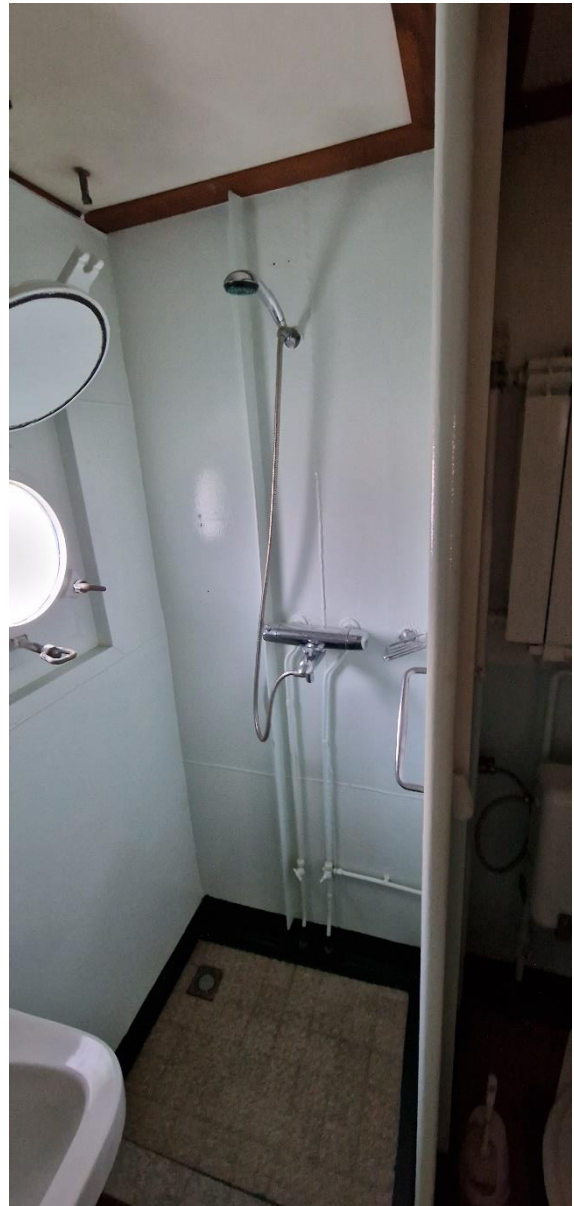






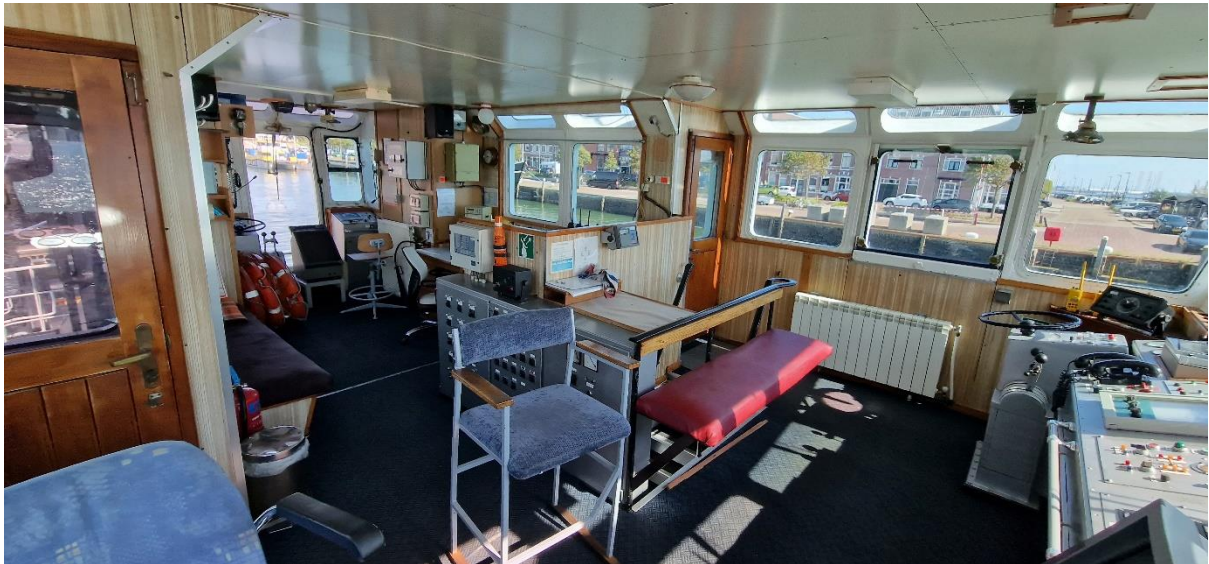




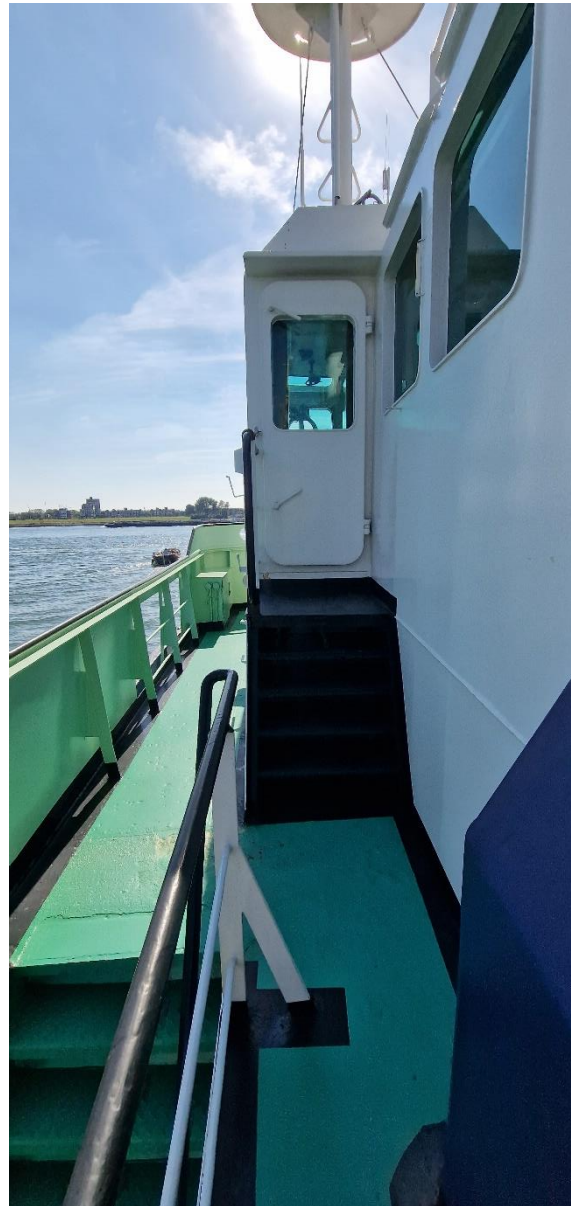


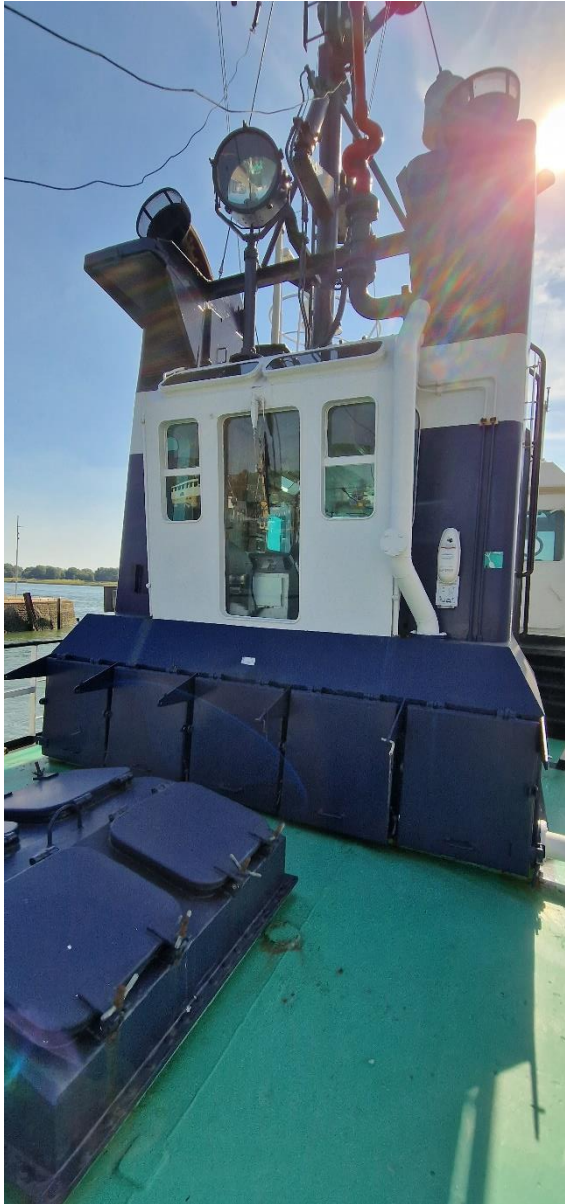


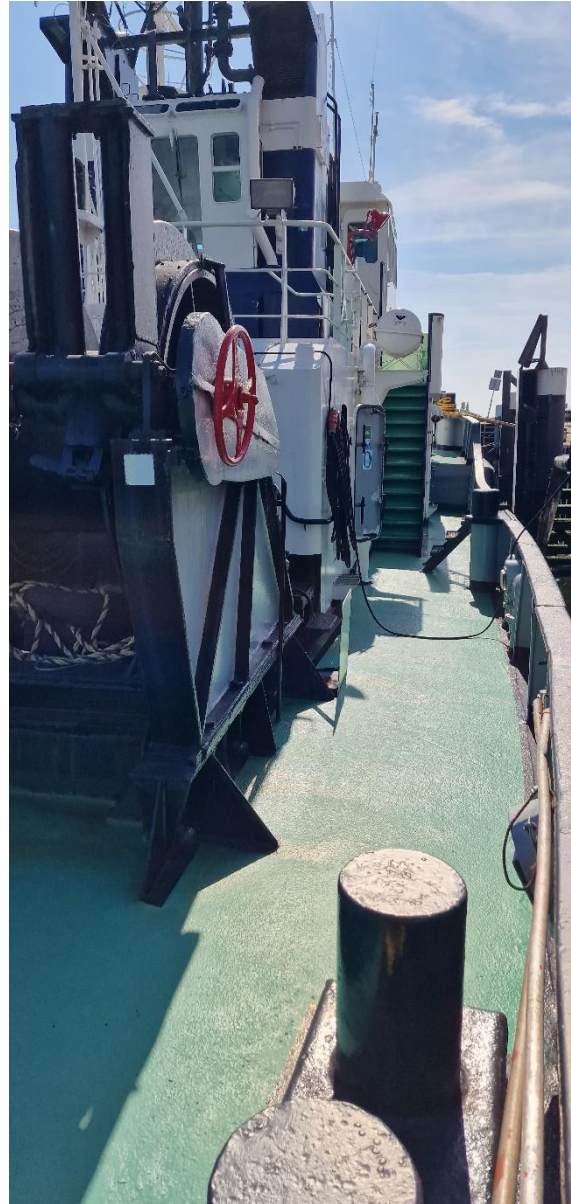
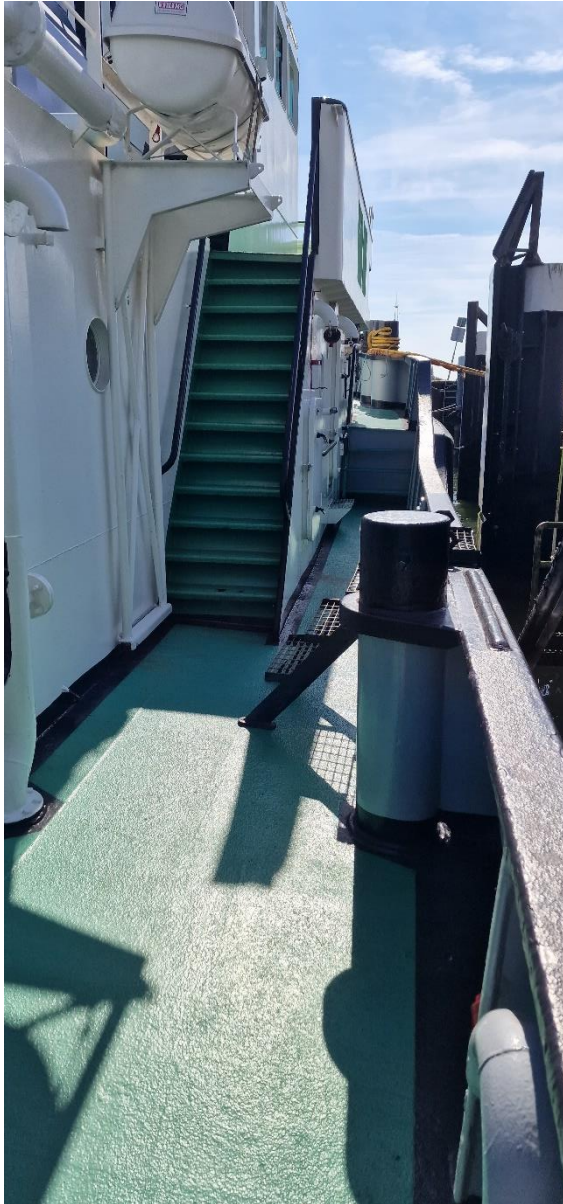




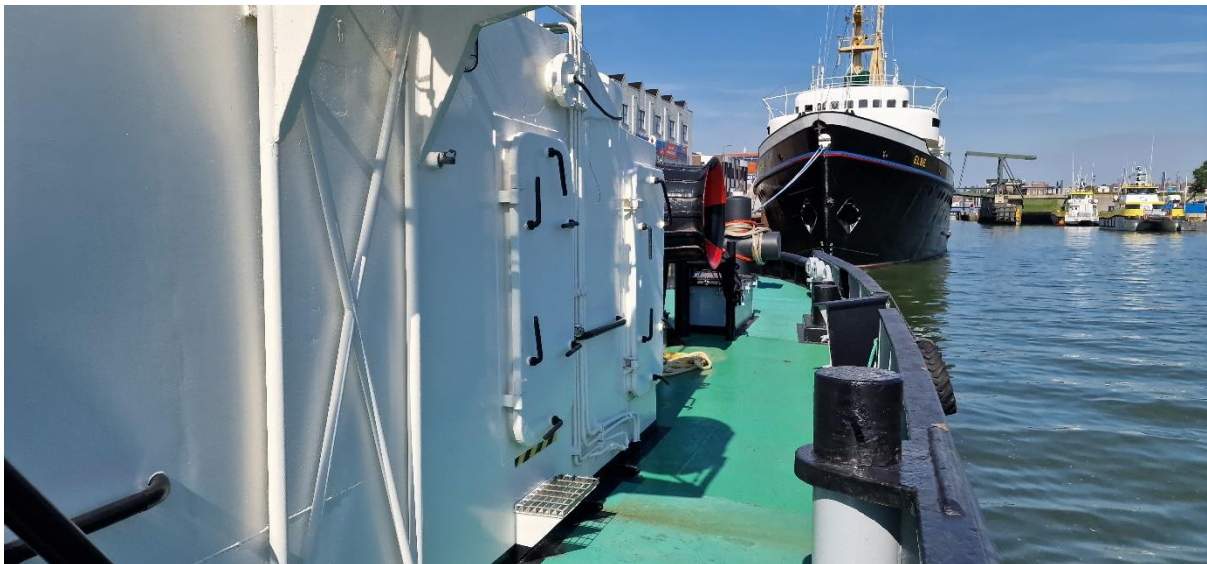


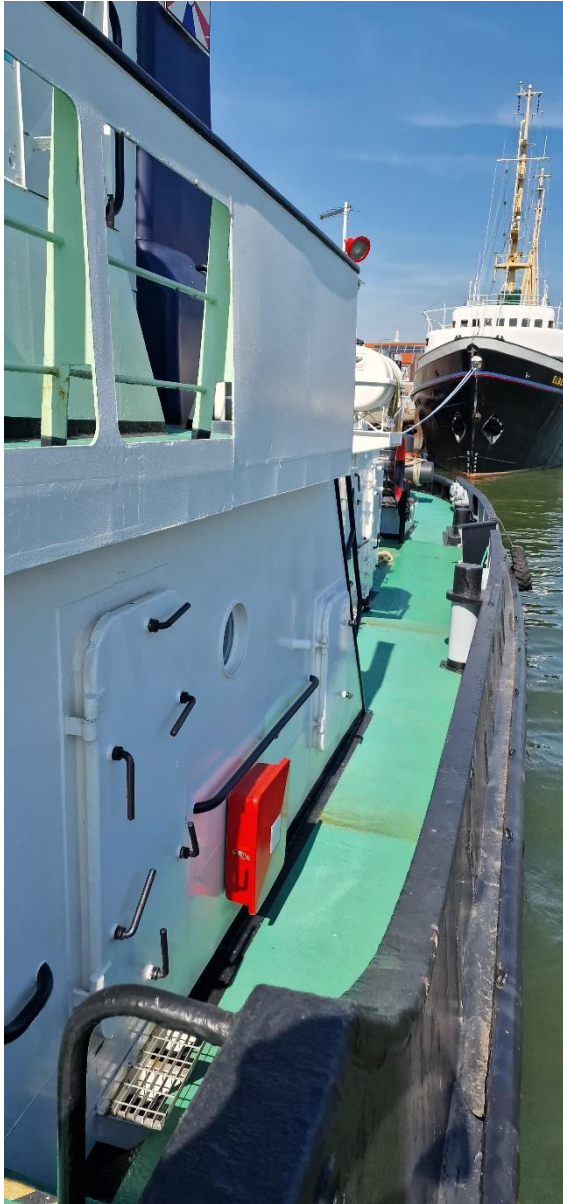






















SIMA SHIPBROKERS
commercial vessel trading

REF: SSB-1028
VSP / VOITH-SCHNEIDER TRACTOR TUG

