

Multipurpose Offshore Support Vessel vessel in very good condition. DD/SS carried out 2024. Very suitable for cable laying, ROV operation and maintenance, vibrocore campaigns, cable burial and backfilling of trenches in shallow waters, seismic support, geotechnical activities, survey activities, offshore wind construction assistance and anchor handling duties. Fitted with 4-point mooring, four pumpjets, two sputs, a dredging- and jet pump and 178 t/m main crane, this versatile piece of kit can undertake any type of work in a professional manner.

General

Built	Netherlands
Classification	Polish Register of Shipping (IACS)
Notation	100A1 LMC

Dimensions

LOA	35,36 m.
Beam	10,34 m.
Draught	1.42 m. – 2.39 m. max
Tonnage	Gross 359
	Nett 107

Capacities

Deadweight	
Cargo capacity	
Deck area	150 m ²
Deck load	5 ton/m2
Compartments	
Scantlings	Deck mm
	Bottom mm
	Sides mm

Machinery

Main engines	4x Mitsubishi S6N-MPTA
Output	1.088 hp / 800 kW total
Generators	3x
Output	51 kVA
	290 kVA
	111 kVA
Propulsion	4x 360 deg Schottel pumpjets

Performance

Speed	6 knots max.
Bollard pull	6 tonnes

Deck equipment

4-point mooring	YES
-----------------	-----

Anchor winches	13 ton aft 5-7 ton fore
Deck crane	Main crane 178 t/m Fore crane 40 t/m (1 t. at 14.3 m)
Dredge pump	1.600 m3/hr
Jet pump	1.000 m3/hr
Fuel transfer	Two pumps

Tank capacities

Fuel oil	135 m ³
Fresh water	25 m ³

Communication equipment

MF/HF radio	Furuno FS-1562-15
VHF	Sailor RT2048 VHF / MF DSC controller Furuno DSC-6A Furuno FM-8500 Sailor RT5022
Portable VHF	2x GMDSS handheld ICOM IC-GM1500E
Inmarsat-C	2x Sailor H2095C
AIS	Furuno FA-100
EPIRB	Jotron Tron 40 S
Iridium	Sailor SC4000A/MKIII
Fleet Broadband	JRC JUE-250

Navigation equipment

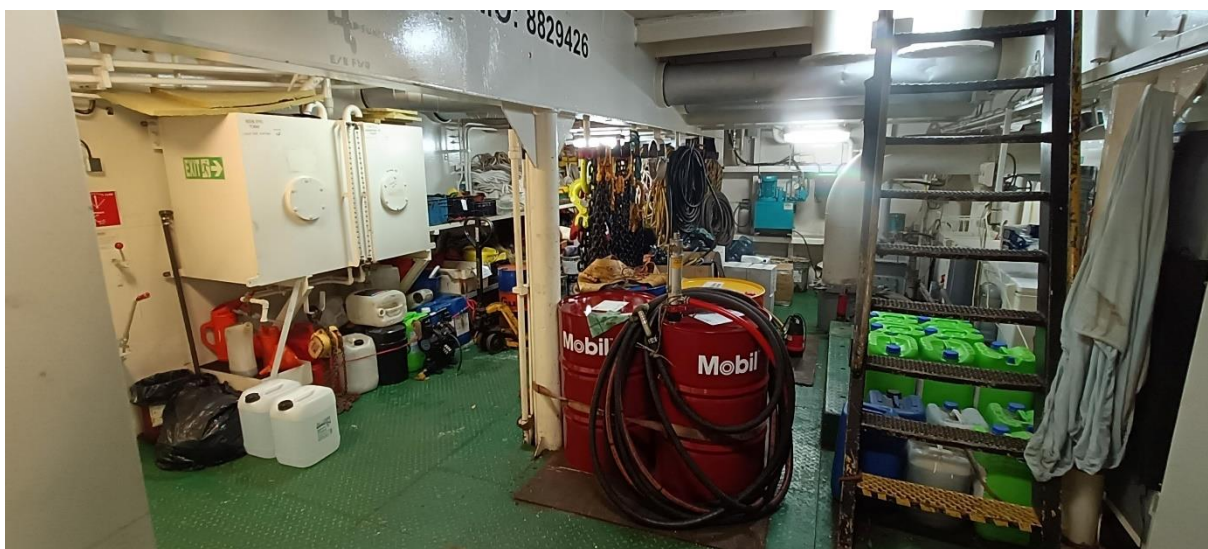
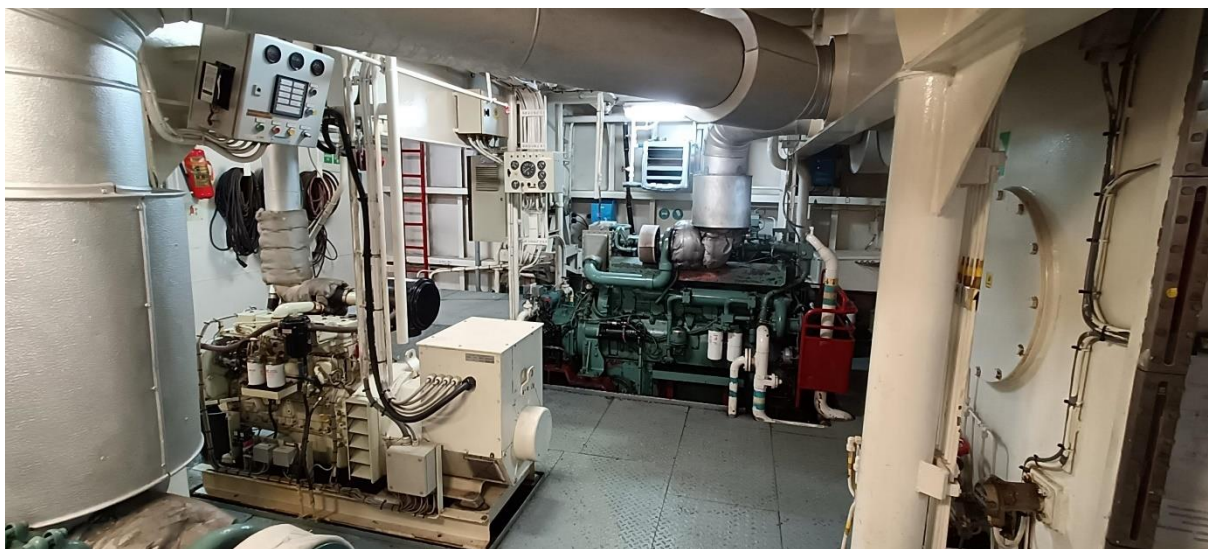
Radar	JRC JMA-5310/6
Sonar	2x Tritech International Ltd Super Seaking
GPS navigation	Furuno GP-500 Furuno GP-90 Furuno GP-150
Echo sounder	Furuno FCV-581L
Navtex	Lokata Navtex 2
Satellite compass	Furuno SC-502
Magn. compass	Observator Pilot MK3 Cassens & Plath 21
Auto pilot	RZ/RHM Seapilot 75
Anemometer	Obsermet OMC / OMO160

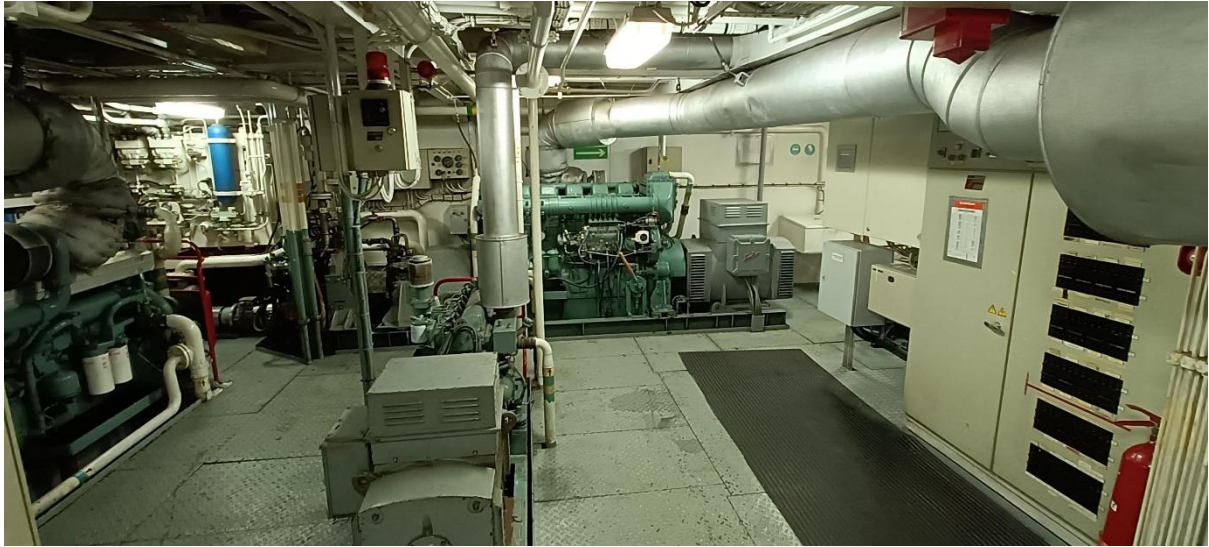
Accommodation

Fully air-conditioned, galley, messroom, sanitary facilities

Cabins	2 single + 2 double
Total berths	6













SIMA SHIPBROKERS
commercial vessel trading

REF: SSB-1052
MULTIPURPOSE OFFSHORE SUPPORT VESSEL











SIMA SHIPBROKERS
commercial vessel trading

REF: SSB-1052
MULTIPURPOSE OFFSHORE SUPPORT VESSEL



